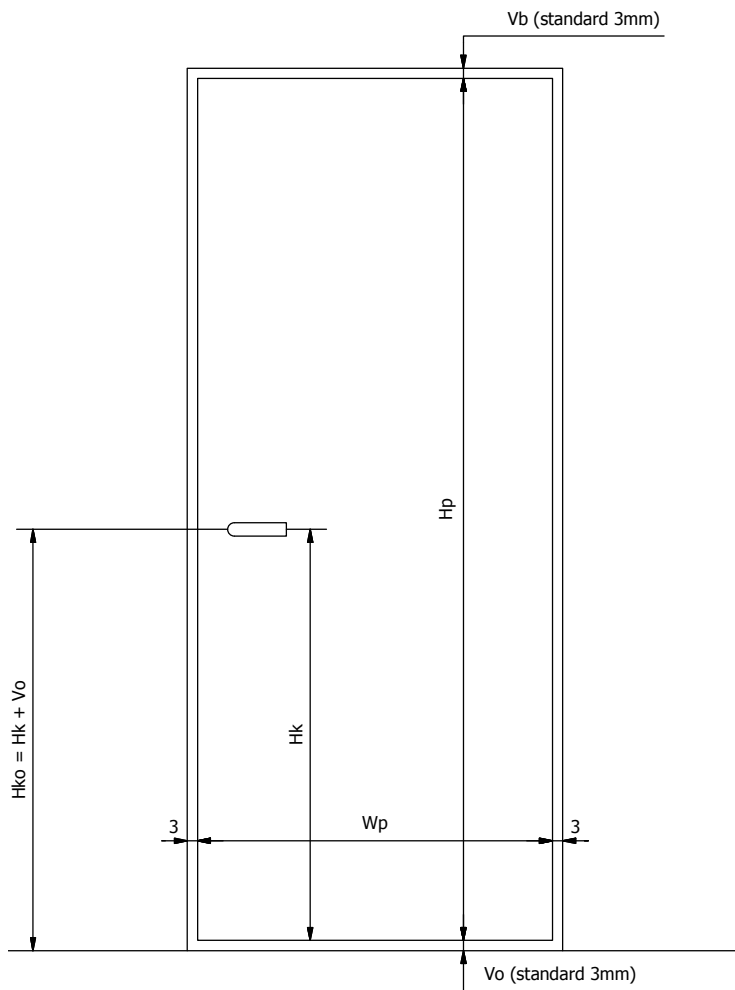


MILLING PLANS



MILLING PLANS

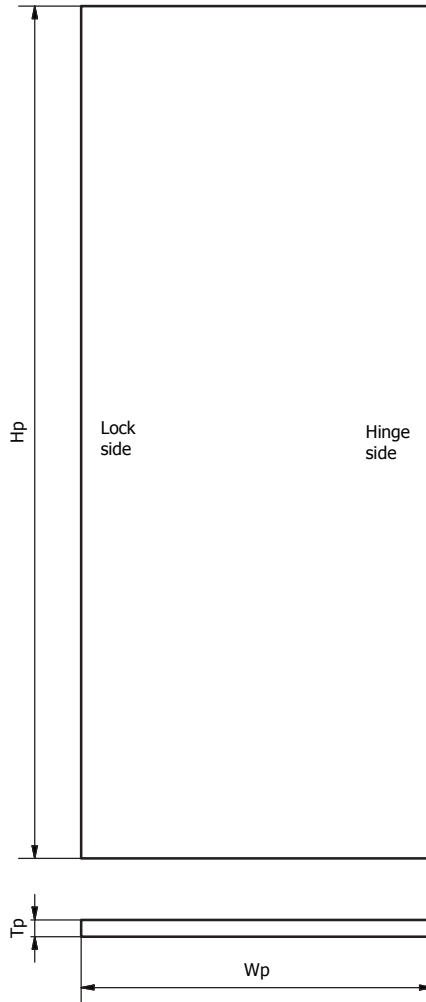
1.....	General view Door EU Right
4-7.....	Xinnix Doors – Lateral Millings
8-11.....	Xinnix Hinges A24.0/A24.1/A24.2/X4030/A30/A31
12-15.....	Hinge TE340 3D/TE540 3D/TE540 3D A8
16.....	Xinnix Lock
17.....	DIN Lock
18.....	Xinnix NZ © Magnetic Roller Lock
19.....	XA-H160/XA-H180
20.....	Noha Mini Lock
21-23.....	Double door
24-25.....	Double door Xinnix Lock
26-28.....	Double door DIN Lock
29-31.....	Door closers
32.....	3 Point Lock

This information is based on the product properties in 2017/10.
Technical improvements and product development may cause technical changes.
The hardware manufacturers may vary dimensions in future without prior notice.

This document is made to inform you in the best way but contains no liability to printing errors
or technical changes beyond our competence.

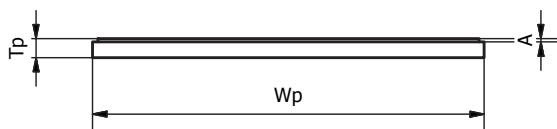
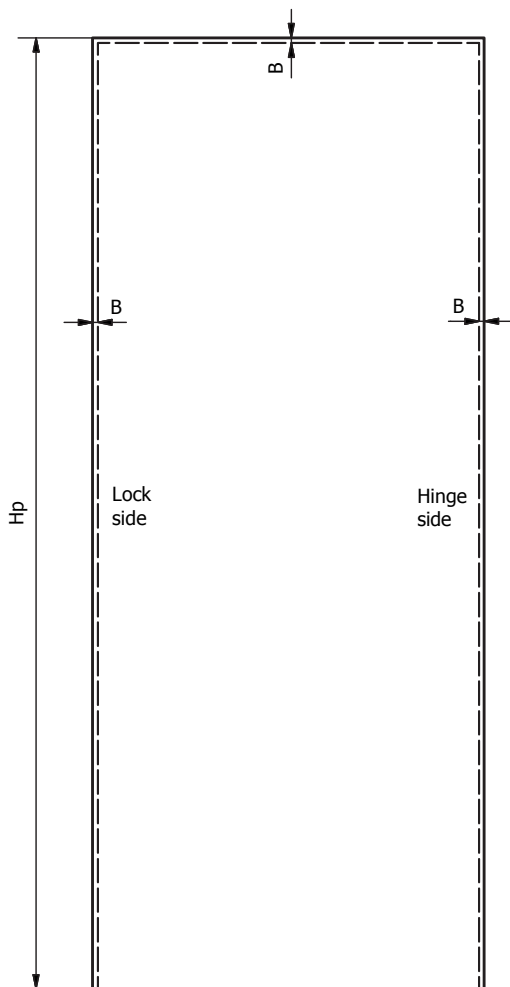
Reprint, reproduction or translation, partly or completely, is not allowed without the written
permission of Xinnix Door Systems bvba. All trademarks are registered trademarks.

Xinnix® Door Type A EU Right



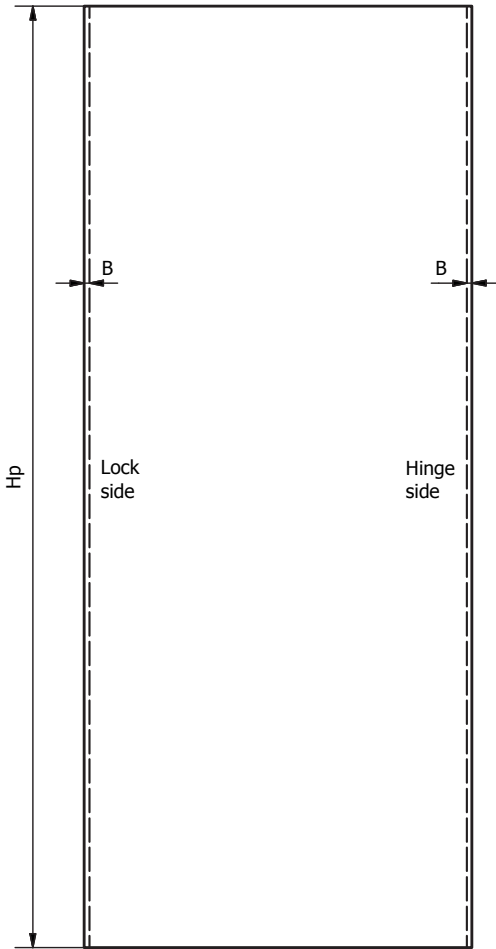
	Tp mm	A mm	B mm	Pull	Push	Ceiling High
X1	40	-	-	x	-	x
X240	40	-	-	x	-	x
X245	44-45	-	-	x	-	x
X250	50	-	-	x	-	x

Xinnix® Door Type B EU Right

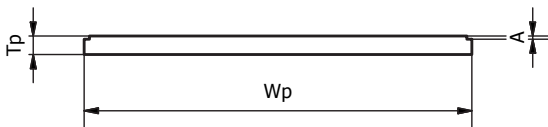


	Tp mm	A mm	B mm	Pull	Push
X40-V	40	7	11	x	x
X45-V	44-45	7	11	x	x
X1-V	50	12	13	x	-
X240-V	50	12	13	x	x
X245-V	55	12	13	x	x
X250-V	60	12	13	x	x

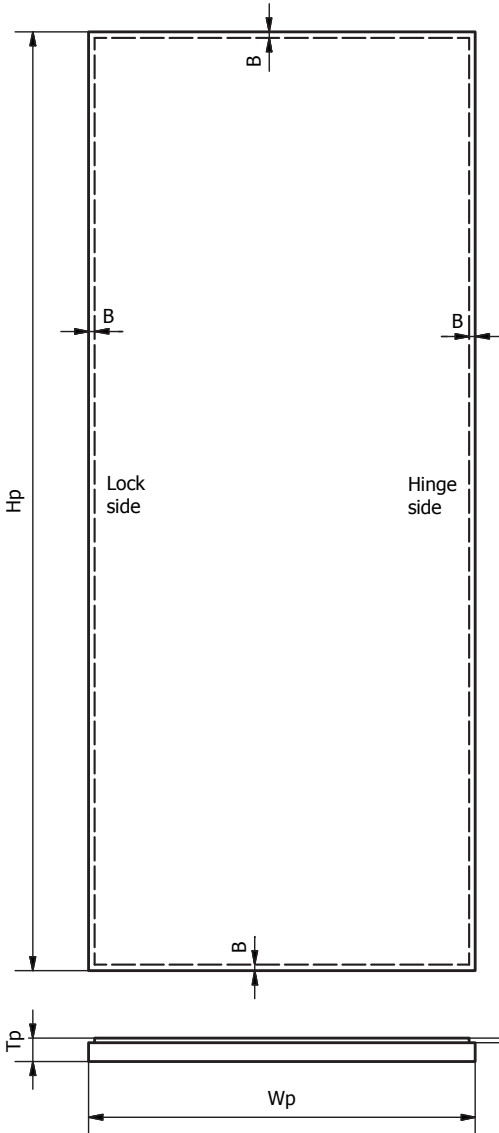
Xinnix® Door Type C EU Right



	Tp mm	A mm	B mm	Pull	Push	Ceiling High
X40-T	40	7	11	x	x	-
X45-T	44-45	7	11	x	x	-
X1-C	50	12	13	x	-	x
X240-C	50	12	13	x	x	x
X245-C	55	12	13	x	x	x
X250-C	60	12	13	x	x	x



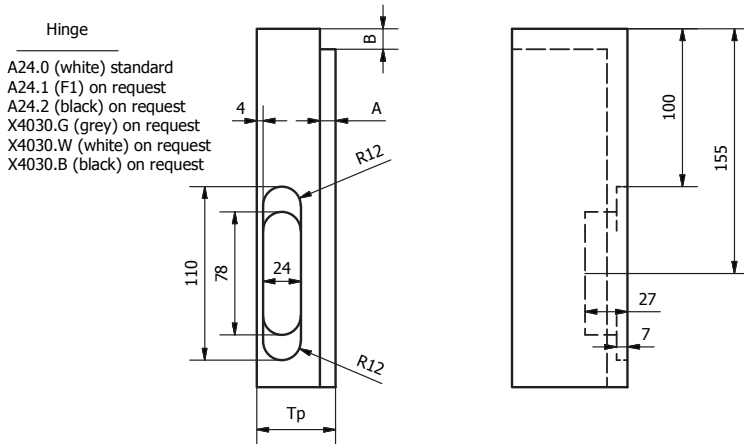
Xinnix® Door Type D EU Right



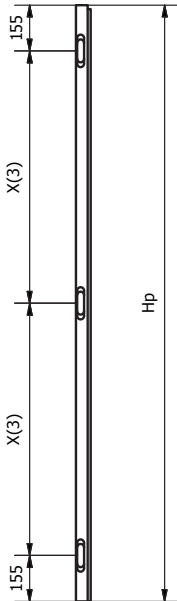
	T_p mm	A mm	B mm	Pull	Push
X40-W	40	7	11	x	x
X45-W	44-45	7	11	x	x
X1-W	50	12	13	x	-
X240-W	50	12	13	x	x
X245-W	55	12	13	x	x
X250-W	60	12	13	x	x

Xinnix® Hinges for door panels EU Right

X1 / X240 / X245 / X250 / X40 / X45

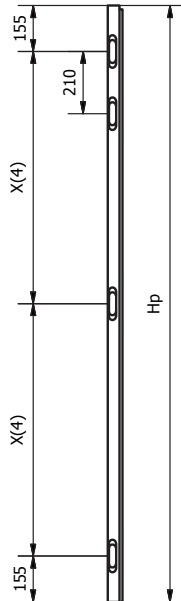


3 Hinges



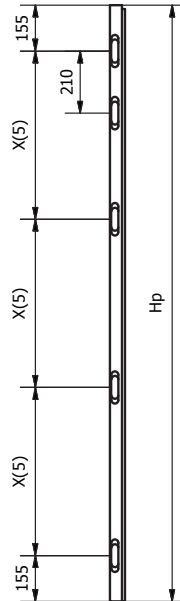
$$X(3) = (Hp - 310)/2$$

4 Hinges



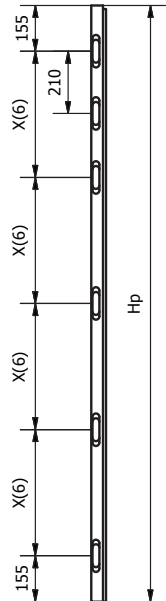
$$X(4) = (Hp - 310)/2$$

5 Hinges



$$X(5) = (Hp - 310)/3$$

6 Hinges



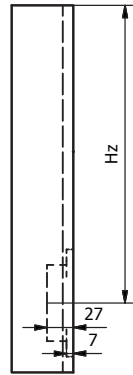
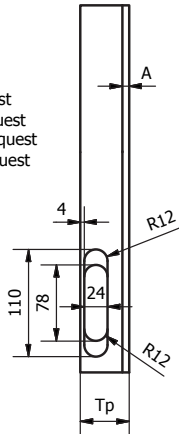
$$x(6) = (Hp - 310)/4$$

Xinnix® Hinges for universal door panels EU Right X40-TU / X45-TU



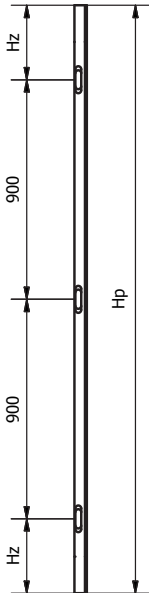
Hinge

A24.0 (white) standard
 A24.1 (F1) on request
 A24.2 (black) on request
 X4030.G (grey) on request
 X4030.W (white) on request
 X4030.B (black) on request



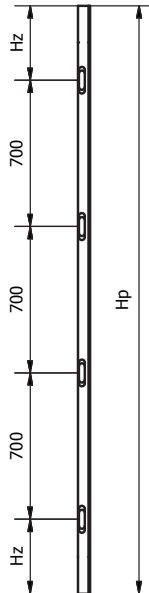
Hz min = 155 mm
 Hz max = 305 mm

Universal 3 Hinges
 2110mm < Hp < 2410mm
 art. X..-TU2110-2410



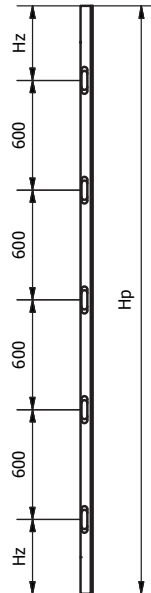
$$Hz = (Hp - 1800)/2$$

Universal 4 Hinges
 2410mm < Hp < 2710mm
 art. X..-TU2410-2710



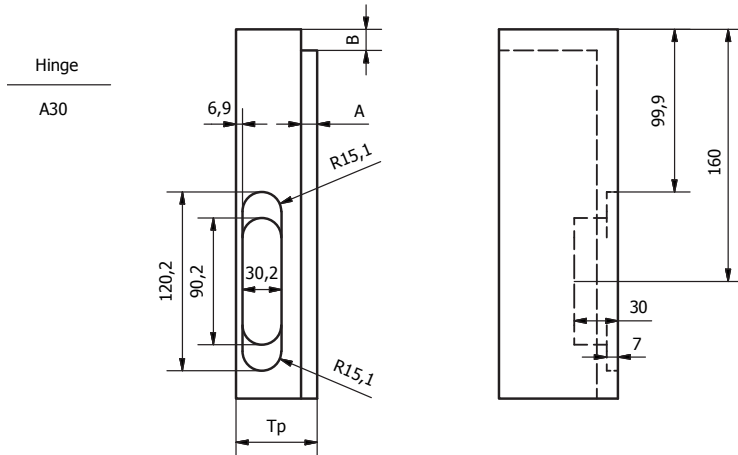
$$Hz = (Hp - 2100)/2$$

Universal 5 Hinges
 2710mm < Hp < 3010mm
 art. X..-TU2410-3010

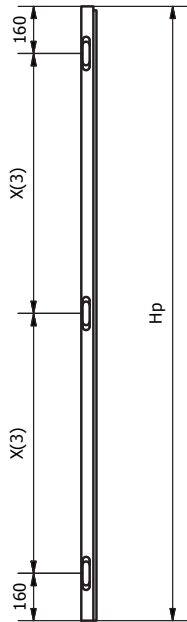


$$Hz = (Hp - 2400)/2$$

A30 Xinnix® Hinges for door panels EU Right X1 / X240 / X245 / X250

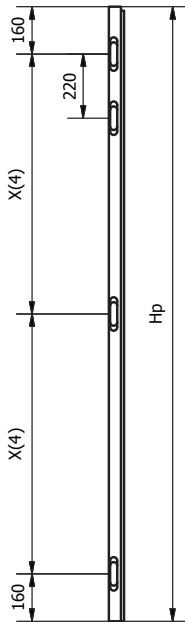


3 Hinges



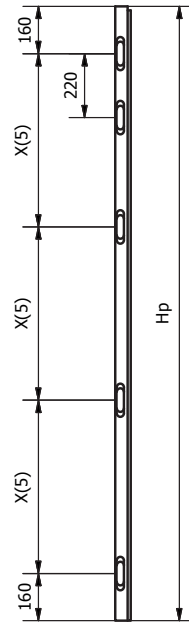
$$X(3) = (Hp - 320)/2$$

4 Hinges



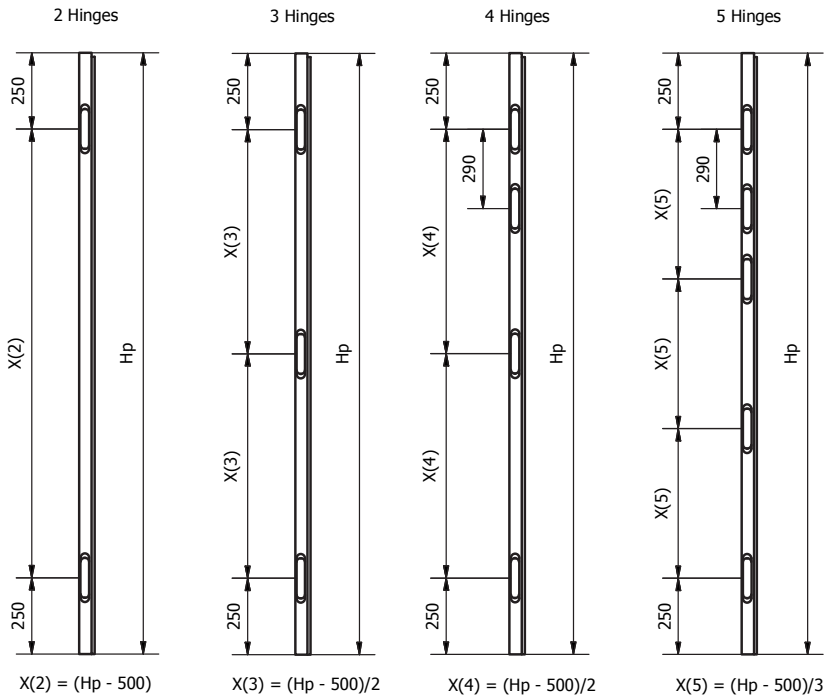
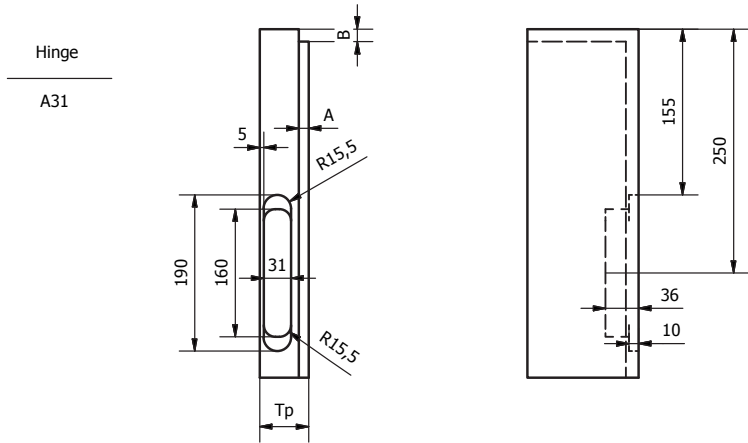
$$X(4) = (Hp - 320)/2$$

5 Hinges



$$X(5) = (Hp - 320)/3$$

A31 Xinnix® Hinges for door panels EU Right X1 / X240 / X245 / X250



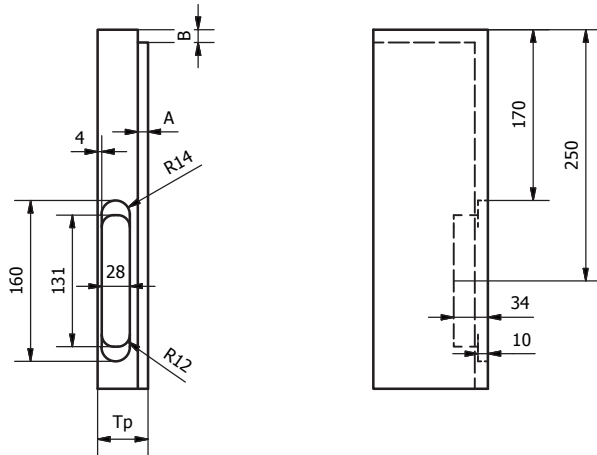
Tectus TE 340 3D Hinges for door panels EU Right

X1S / X240S / X245S / X250S / X45S

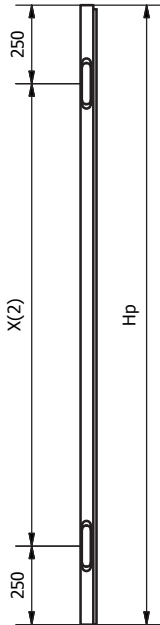


Simonswerk
Hinge

Tectus TE 340 3D

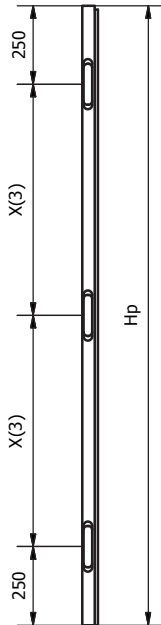


2 Hinges



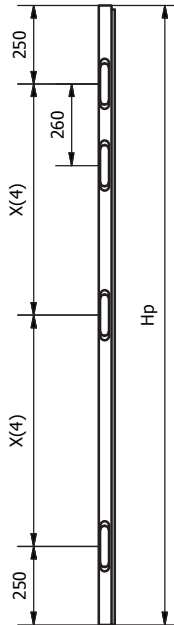
$$X(2) = (Hp - 500)$$

3 Hinges



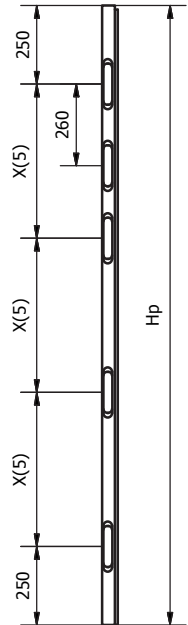
$$X(3) = (Hp - 500)/2$$

4 Hinges



$$X(4) = (Hp - 500)/2$$

5 Hinges



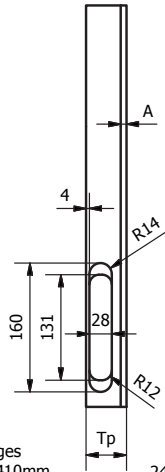
$$X(5) = (Hp - 500)/3$$

Tectus TE 340 3D Hinges for universal door panels EU Right X45S-TU



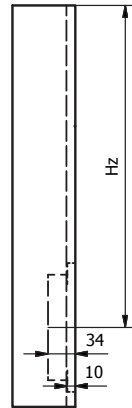
Simonswerk
Hinge

Tectus TE 340 3D



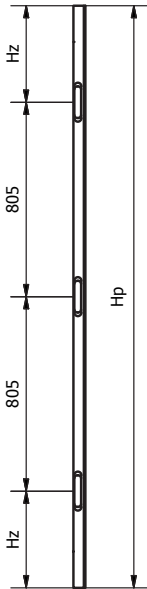
Universal 3 Hinges
2110mm < Hp < 2410mm

Universal 4 Hinges
2410mm < Hp < 2710mm

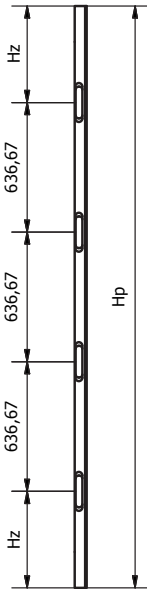


Hz min = 250 mm
Hz max = 400 mm

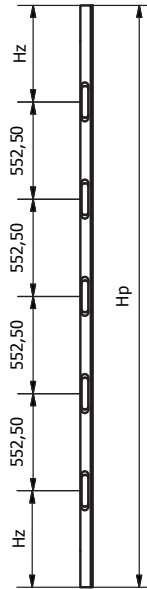
Universal 5 Hinges
2710mm < Hp < 3010mm



$$Hz = (Hp - 1610)/2$$



$$Hz = (Hp - 1910)/2$$



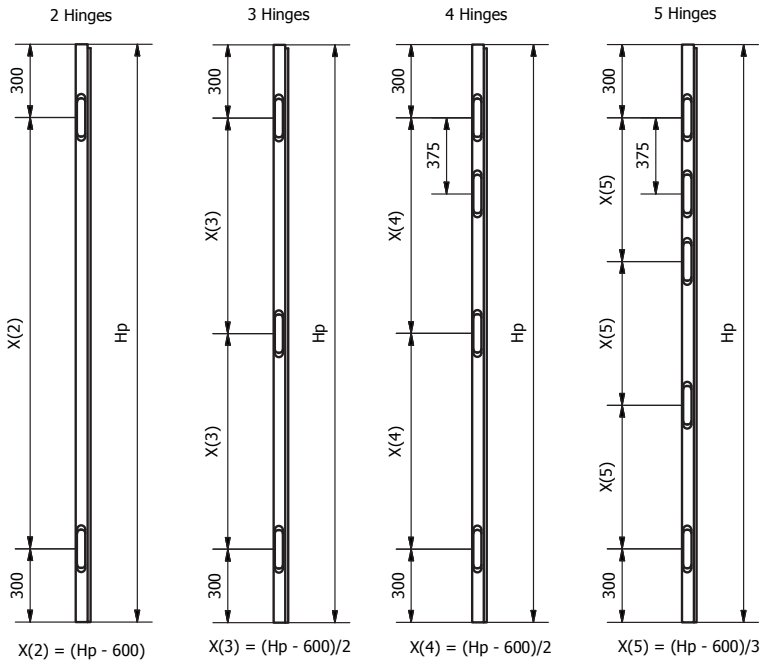
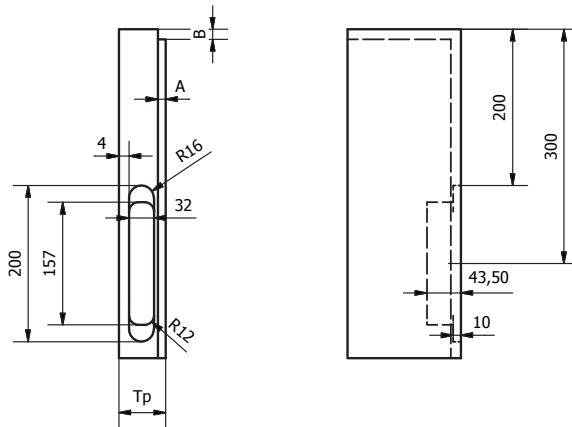
$$Hz = (Hp - 2210)/2$$

Tectus TE 540 3D Hinges for door panels EU Right

X1 / X240 / X245 / X250



Simonswerk
Hinge
Tectus TE 540 3D



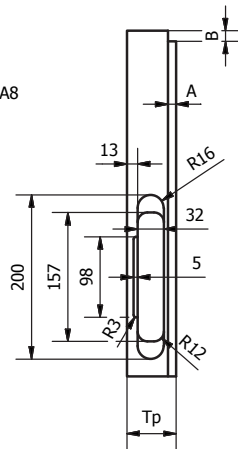
Tectus TE 540 3D A8 Hinges for door panels EU Right X250



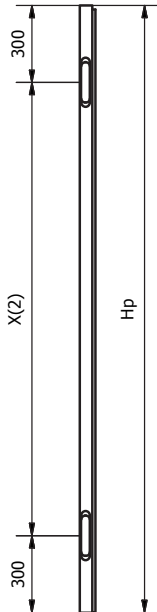
Simonswerk
Hinge

Tectus TE 540 3D A8

TP - A = 50mm

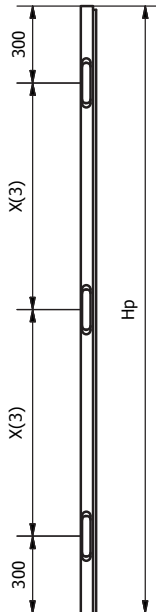


2 Hinges



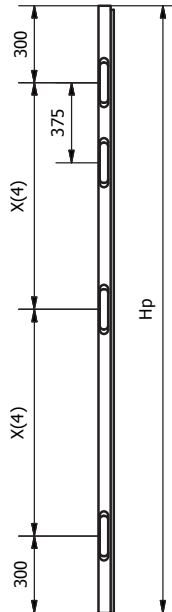
$$X(2) = (Hp - 600)$$

3 Hinges



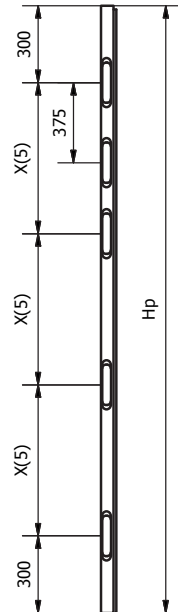
$$X(3) = (Hp - 600)/2$$

4 Hinges



$$X(4) = (Hp - 600)/2$$

5 Hinges



$$X(5) = (Hp - 600)/3$$

Xinnix® Locks for door panels EU Right

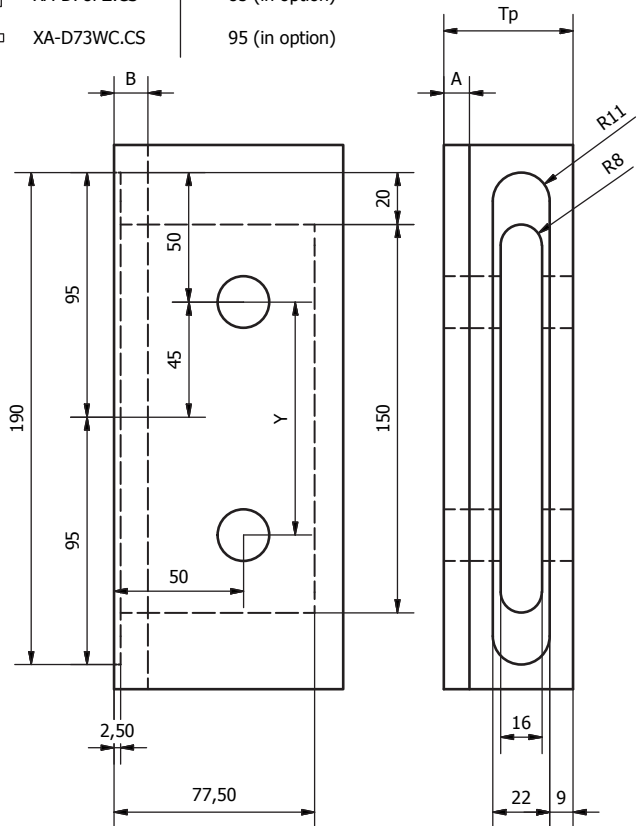
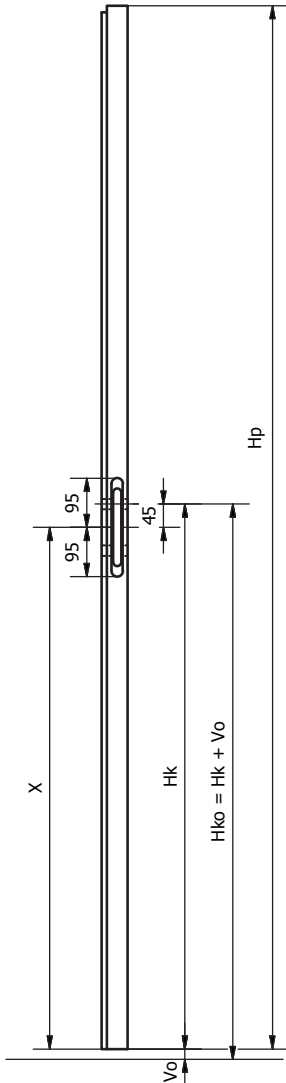
Standard $V_o = 3\text{mm}$
 For standard door panels / country

System X40-T/X45-T and $H_p \leq 2050\text{mm}$
 $X = H_p / 2$

Other Systems or $H_p > 2050\text{mm}$
 $X = 1007,5\text{mm}$

$H_k = X + 45\text{mm}$ (Height handle on door)
 $H_{ko} = H_k + V_o$ (Height floor - Height handle)

Xinnix Lock	Y
	□ 8mm
⊙ XA-D70BB.CS	90 (standard)
⊙ XA-D78PZ.CS	85 (in option)
□ XA-D73WC.CS	95 (in option)



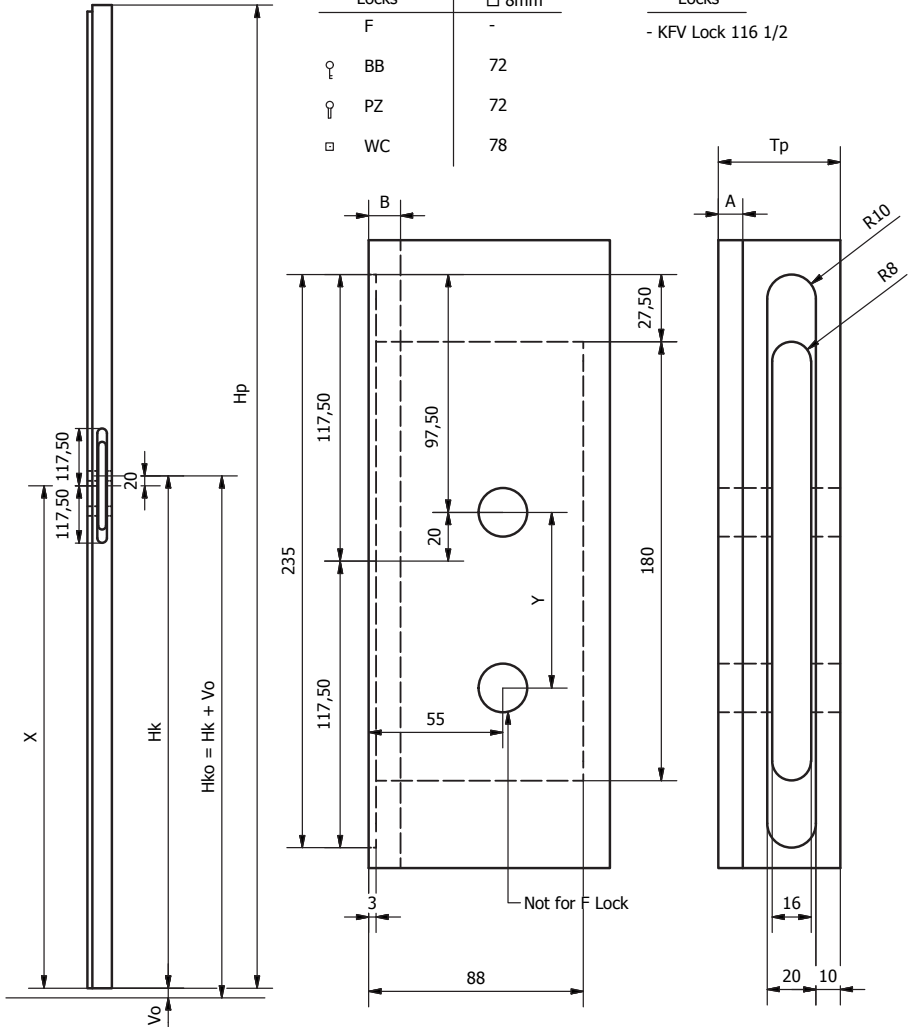
Din Locks for door panels EU Right

Standard Vo = 3mm
 Standard X = 1030mm
 Hk = X + 20mm (Height handle on door)
 Hko = Hk + Vo (Height floor - Height handle)



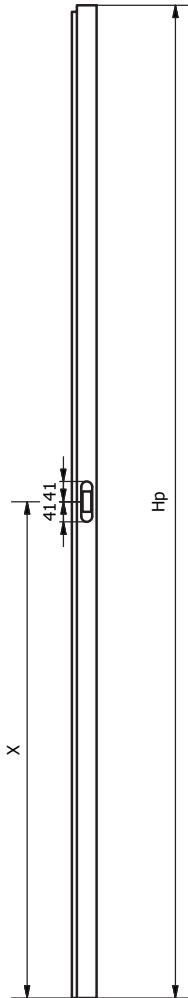
DIN Locks	Y
F	-
□ BB	72
□ PZ	72
□ WC	78

DIN Locks
 - KFV Lock 116 1/2



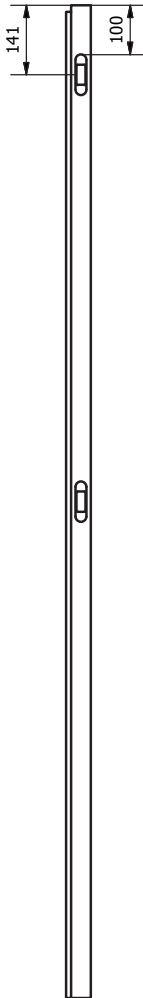
NZ Xinnix® Lock for door panels EU Right

1 NZ Lock



2 NZ Locks
on demand

(recommended Hp > 2300 mm)



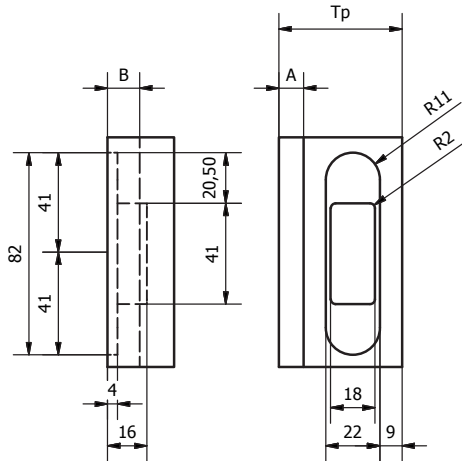
Standard Vo = 3mm
For standard door panels / country

System X40-T/X45-T and Hp <= 2050 mm
X = Hp / 2

Other systems or Hp > 2050 mm
X = 1007,5 mm

NZ Xinnix Locks

- XA-NZ.W (White)
- XA-NZ.G (Grey)
- XA-NZ.B (Black)



Door handle XA-H160 / XA-H180



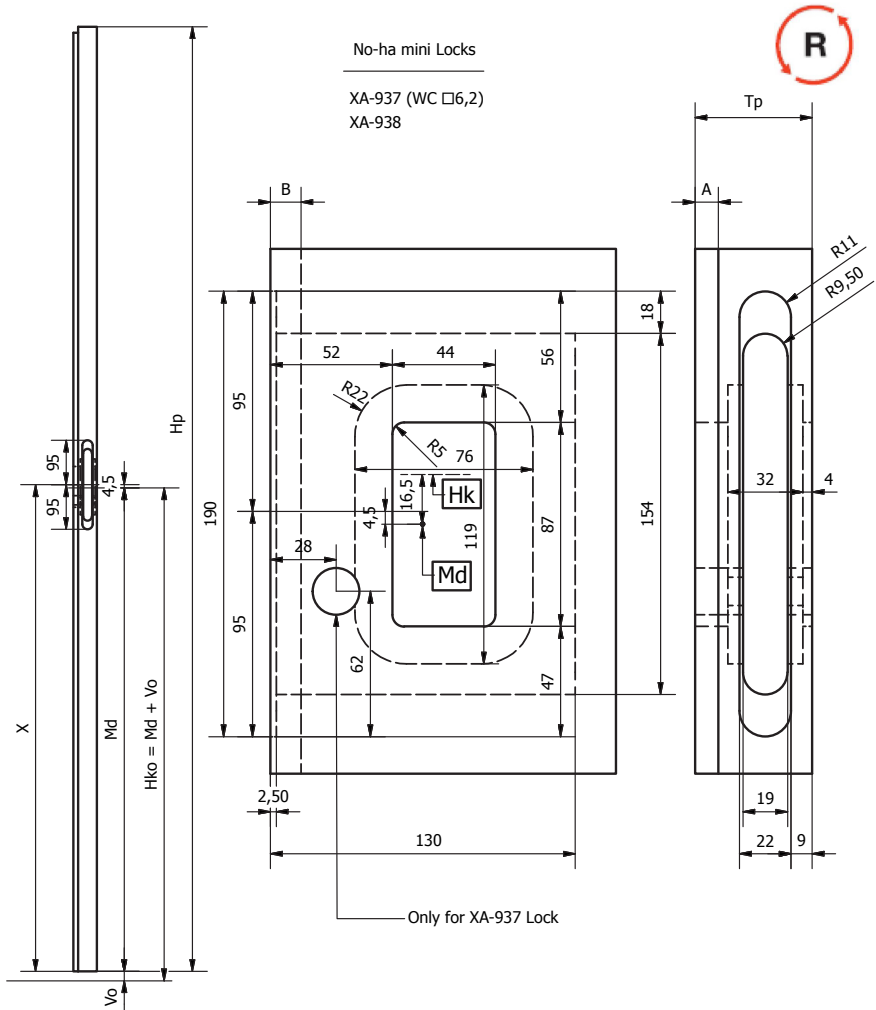
	HA	HB	
XA-H160.NS (metal look) XA-H160.W (white) XA-H160.B (black)	157	22	Horizontal Vertical Installation
XA-H180.NS (metal look) XA-H180.W (white) XA-H180.B (black)	177,5	42,5	Horizontal Installation Advised

in combination with Xinnix NZ Magnetic Roller lock (see page 18)

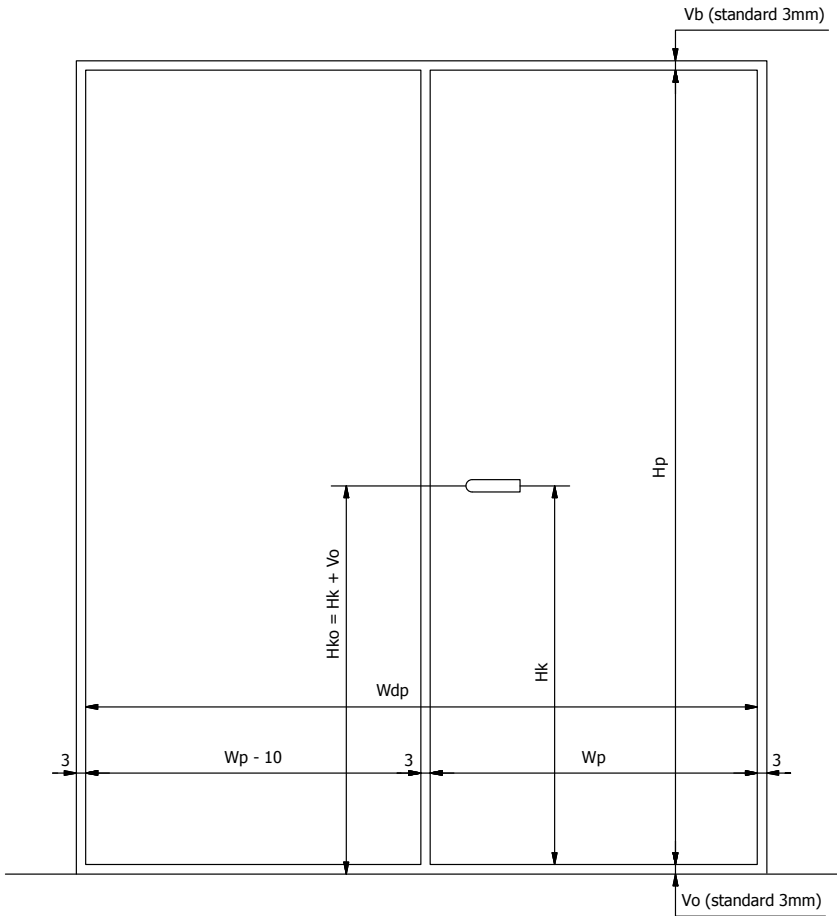
Noha Mini Lock for door panels EU Right

Standard $V_o = 3\text{mm}$
 Standard $X = 1038\text{mm}$ for $M_d = 1033,5\text{mm}$ ($H_k = 1050\text{mm}$)
 $M_d = X - 4,5\text{mm}$ (Height middle Push plate on door)
 $H_{ko} = M_d + V_o$ (Height floor - Height middle Push plate)

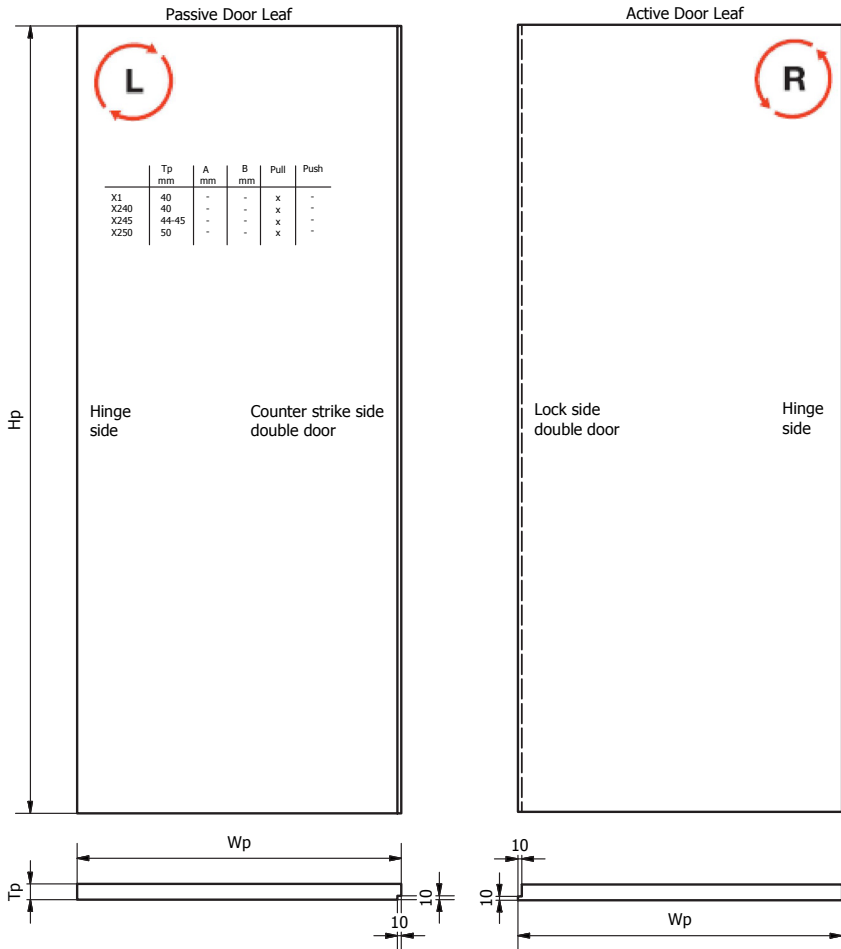
! Except for standard door panels / country system X40-T/X45-T with $H_p \leq 2050\text{mm}$!
 $X = (H_p / 2) + 30,5\text{mm}$



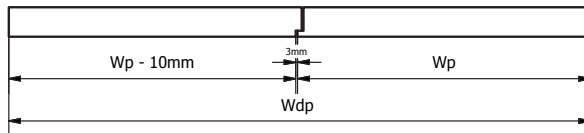
General view Double Door EU



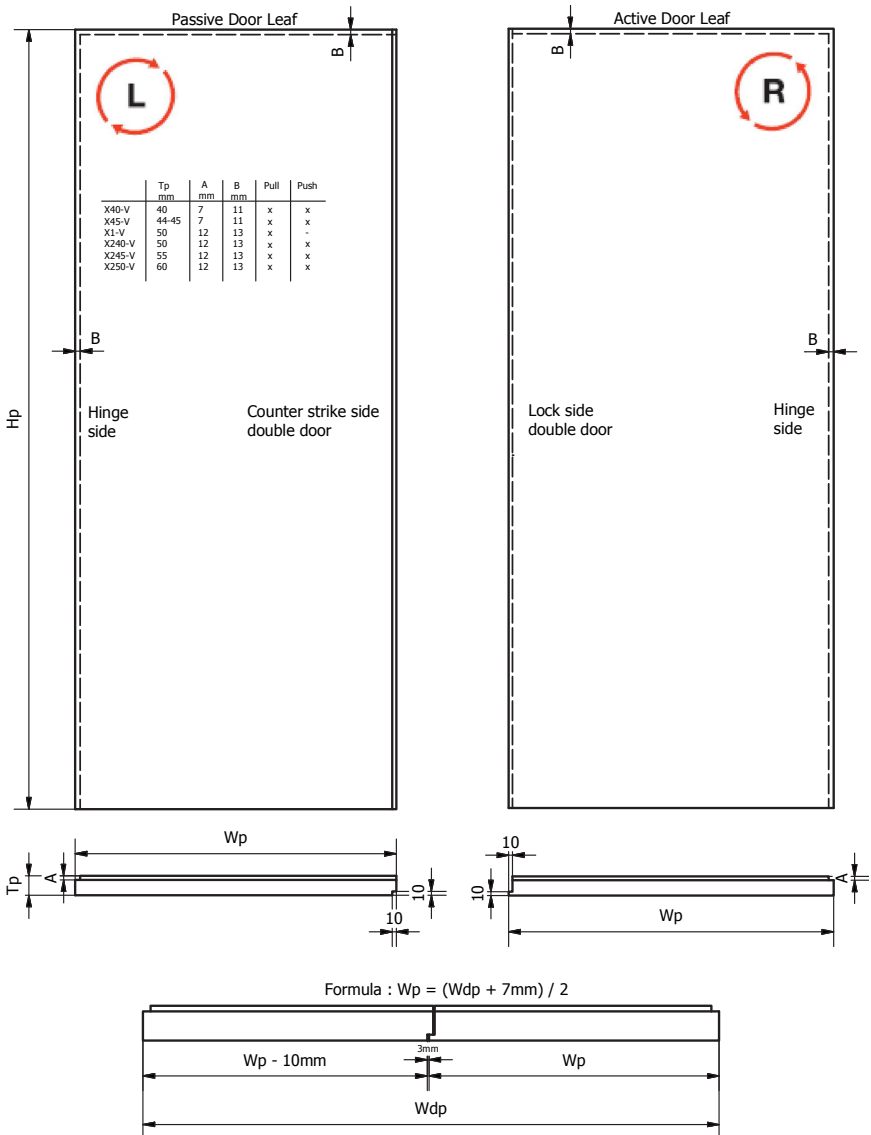
Double Door Type A EU Left - Right



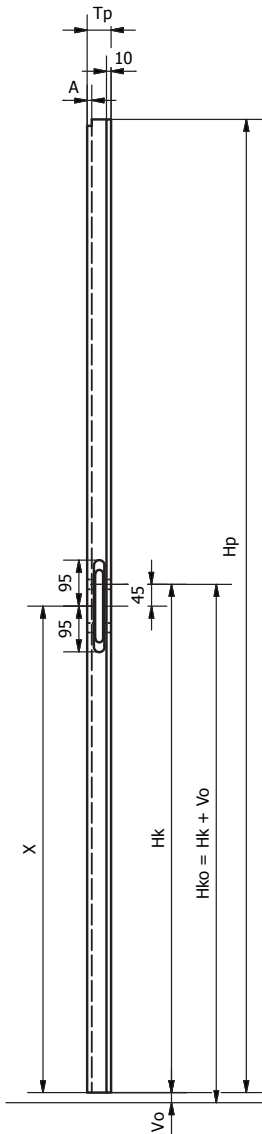
Formula : $Wp = (Wdp + 7mm) / 2$



Double Door Type B EU Left - Right



Xinnix® Locks for double door active panel EU Right



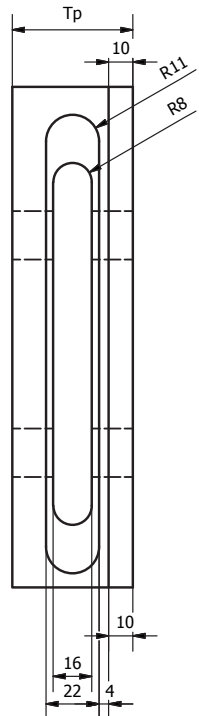
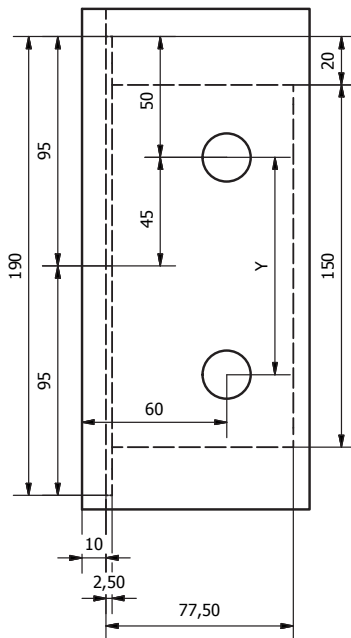
Standard $V_o = 3\text{mm}$

X is depending on Hk (Height handle on door)

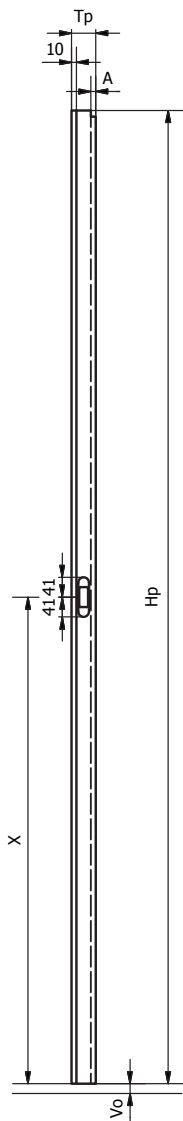
$H_k = X + 45\text{mm}$ (Height handle on door)

$H_{ko} = H_k + V_o$ (Height floor - Height handle)

Xinnix Lock	Y
	□ 8mm
⊕ XA-D70BB.CS	90 (standard)
⊕ XA-D78PZ.CS	85 (in option)
□ XA-D73WC.CS	95 (in option)



Counter strike for Xinnix® Locks for double door passive panel EU Left

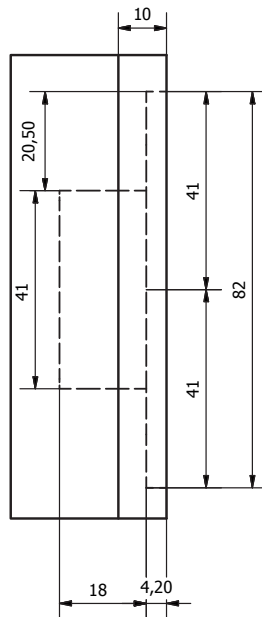
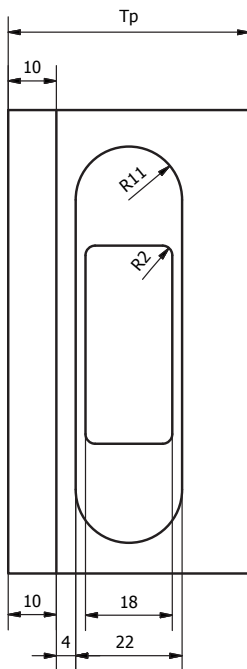


Standard Vo = 3mm

X is depending on Hk (Height handle on door)

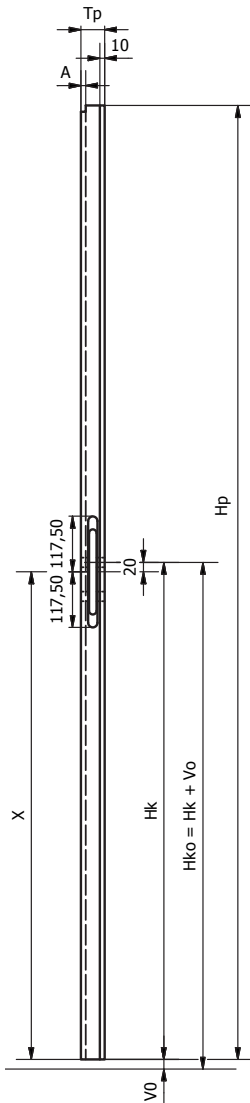
Hk = X + 45mm (Height handle on door)

Hko = Hk + Vo (Height floor - Height handle)



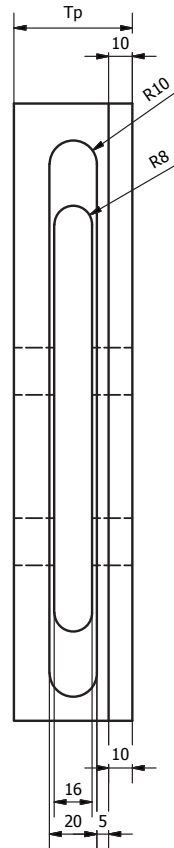
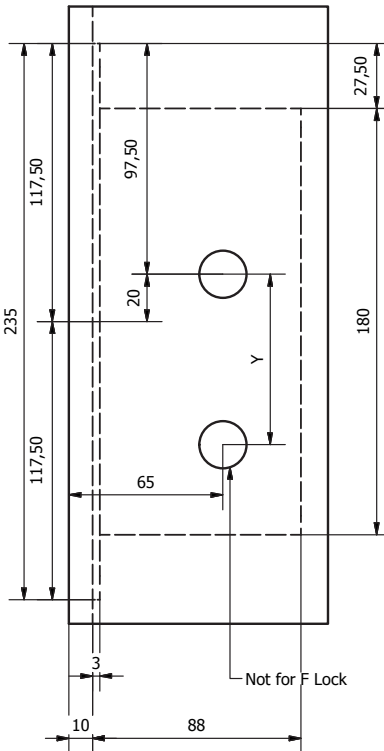
DIN Locks for double door active panel EU Right

Standard $V_0 = 3\text{mm}$
 Standard $X = 1030\text{mm}$
 $H_k = X + 20\text{mm}$ (Height handle on door)
 $H_{ko} = H_k + V_0$ (Height floor - Height handle)

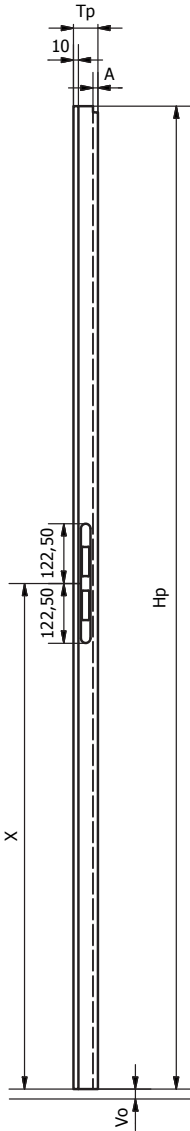


DIN Locks	Y □ 8mm
F	-
BB	72
PZ	72
WC	78

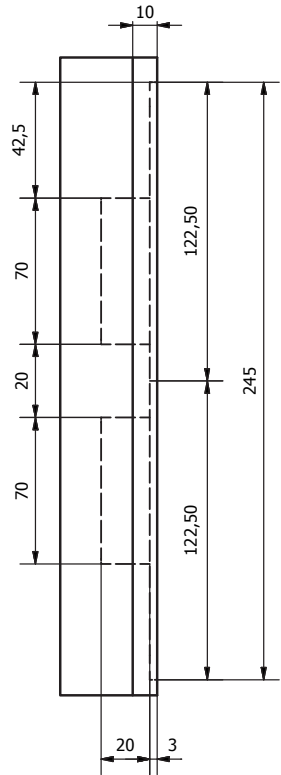
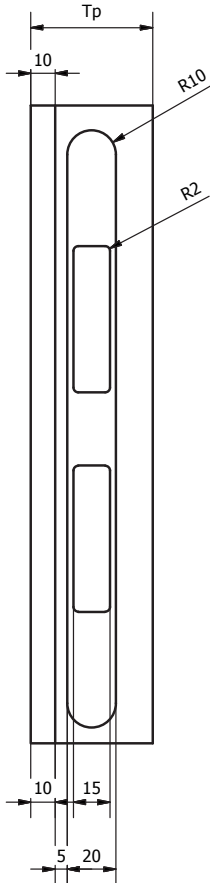
DIN Locks
 - KFV Lock 116 1/2



Counter strike for DIN Locks for double door passive panel EU Left

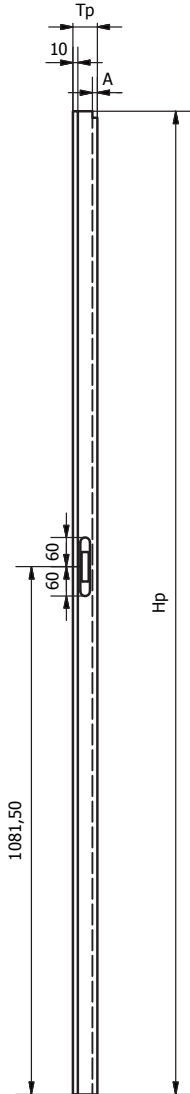


Standard Vo = 3mm
 Standard X = 1036,5mm
 Standard Hk = 1050mm (Height handle on door)
 Standard Hko = 1053mm (Height floor - Height handle)

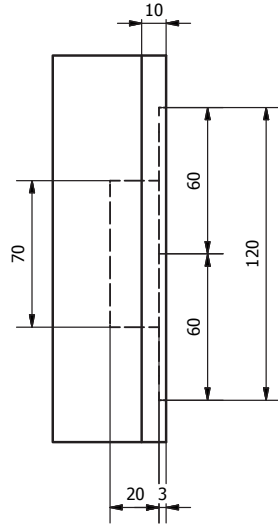
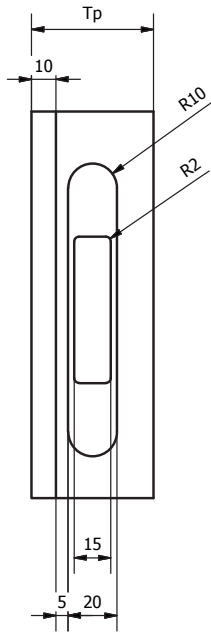


DIN Counterstrikes
 Counter strike KFV art.nr. 116-245-20HR/41

Counter strike for DIN F Lock for double door passive panel EU Left



Standard Vo = 3mm
 Standard X = 1081,5mm
 Standard Hk = 1050mm (Height handle on door)
 Standard Hko = 1053mm (Height floor - Height handle)



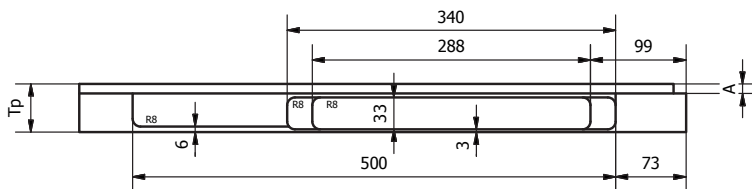
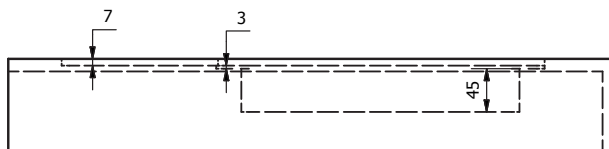
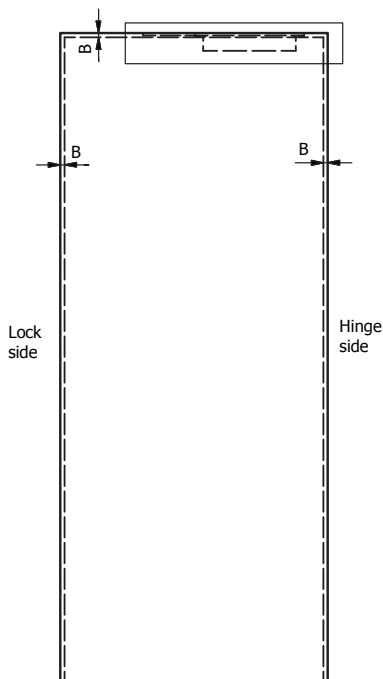
Counterstrikes for DIN F Locks

Counter strike KfV art.nr. 116-120-20HR/41

GEZE Boxer Gr. 2-4/Dorma ITS 96 EN 2-4
 Integrated Door Closers for door panels EU
 Right X1 / X240 / X245 / X250

GEZE Boxer Gr.2-4
 Boxer 12mm
 Mat.nr.129213
 (standard)

DORMA ITS 96 EN 2-4
 G 96 N20 K8/K12

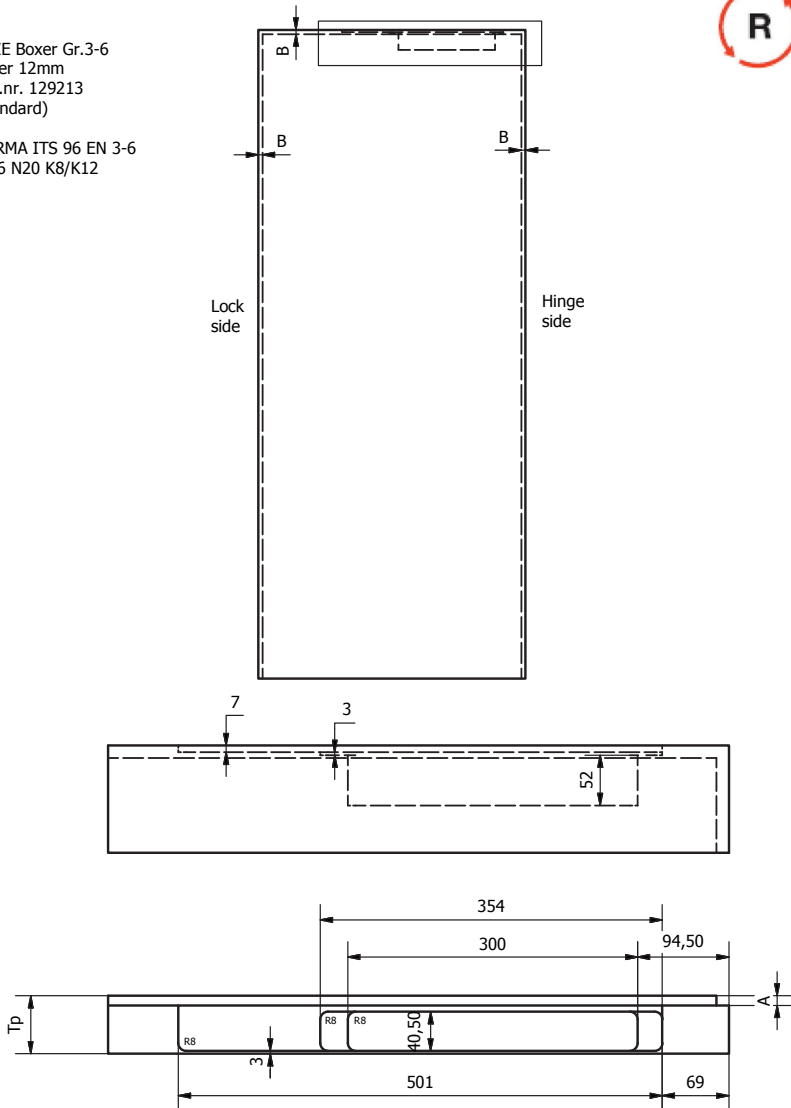


GEZE Boxer Gr. 3-6/Dorma ITS 96 EN 3-6
 Integrated Door Closer for door panels EU
 Right X250



GEZE Boxer Gr.3-6
 Boxer 12mm
 Mat.nr. 129213
 (standard)

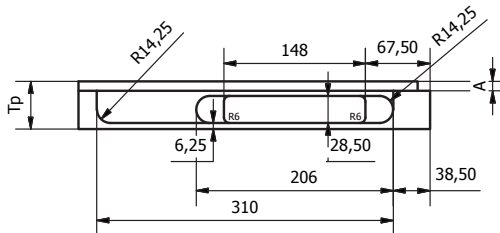
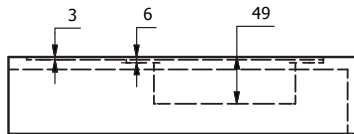
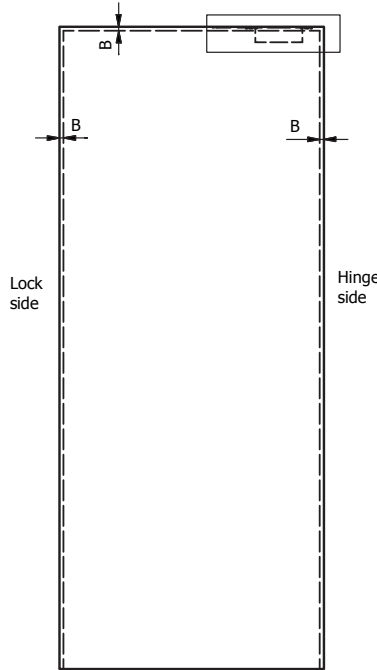
DORMA ITS 96 EN 3-6
 G 96 N20 K8/K12



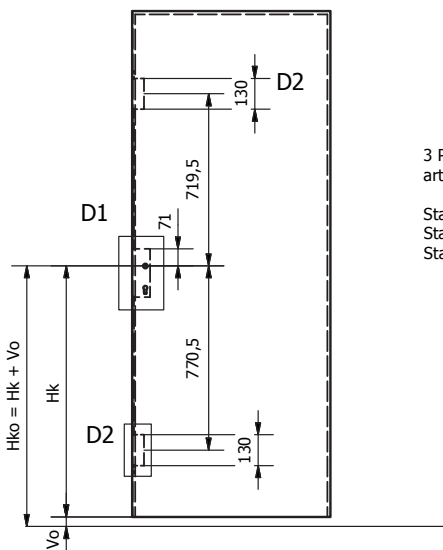
GEZE Active Stop Integrated Door Closer for door panels EU Right X1 / X240 / X245 / X250



GEZE
ACTIVE STOP
Max. Weight Door Panel 40 kg



3 Point Lock Winkhaus for door panels EU Right



3 Point Lock Winkhaus
art.nr. 2925390

Standard Vo = 3mm
Standard Hk = 1050mm (Height handle on door)
Standard Hko = 1053mm (Height floor - Height handle)

