

THE MOTION YOU TRUST

2020

DRAWER SLIDE SYSTEMS

FOR PROFESSIONAL APPLICATIONS



2020

DRAWER SLIDE SYSTEMS

FOR PROFESSIONAL APPLICATIONS

Roller Bearing Drawer Slide Systems
Vertical Pantry Pull-Out Slide Systems
Stainless Steel Roller Bearing Drawer Slide Systems
Ball Bearing Drawer Slides



INNOVATIONS

Innovative Product Solutions

FILTERER is positioned in the global market and known as a leading manufacturer of robust and reliable drawer slide systems. Innovation driven product development occurs through close engagement with key equipment producers in a wide variety of industries and demanding applications.

Continuous investments into state-of-the-art manufacturing equipment and tooling technology contribute to meet highest quality standards and cost efficiency.

FILTERER does provide the widest range of drawer slide systems in its product portfolio. Even more FILTERER's product design and engineering team is highly committed to create customized product solutions tailored to a specific application requirement. In the in-house global R&D center motivated engineers create the ideal product in conjunction with customers and consumers. Flexibility and quick responsiveness by utilizing rapid prototyping solutions resulting in innovative new products and continuous product improvements. All new products are thoroughly performance and endurance tested in the advanced on-site testing laboratories prior to release in mass production.

Q U A L I T Y





Quality management

All FULLERER manufacturing locations are certified according to EN ISO 9001 standards. Continuous investments into tooling equipment, testing and measuring technology are contributing to meet best-in-class product quality and highest efficiency.



RoHS

'Restriction of the use of certain Hazardous Substances' is the directive on the use of certain hazardous substances. Our products comply with the RoHS directive and are manufactured in compliance with the latest EU regulations.



REACH

The company policy is to use only materials and processes which comply with the REACH Regulation. As a down-stream user, we have asked our suppliers to deliver us products according to the REACH Regulation and 'if necessary' to pre-register these products. We have asked our suppliers, when they, or their suppliers, don't pre-register to inform us and to offer a replacement for that product according to the REACH Regulation.



NSF (National Sanitation Foundation)

All FULLERER stainless steel drawer slide systems are NSF-tested and meet the highest hygiene standards for public health and safety in the food processing industry.



MARKET PRESENCE

Generally FULTERER products are marketed directly to Original Equipment Manufacturers.

FULTERER staff and distribution partners are available to you in worldwide five wholly owned locations in Austria, Switzerland, USA, China and Mexico and regional distributors globally. Application experts provide engineering support to determine the ideal product for each individual application.

PRODUCT PORTFOLIO

Our drawer slide systems are categorised into the following product groups:

- **Roller Bearing Drawer Slide Systems:**
The roller components consists of either synthetic rollers, steel ball bearings or synthetic encased steel ball bearings.
- **Ball Bearing Drawer Slides:**
The runner unit design is based of steel balls caged in a retainer.
- **Vertical Pantry Pull-Out Slide Systems**

LOAD CAPACITY

Generally, the load capacity is indicated by the values for the highest permissible dynamic load. The load capacity is factored of load weight, slide extension, and lifetime expectation respective number of duty-cycles. One duty-cycle is equal to one entire opening and closing of a drawer.

Attention: These values only apply with the use of suitable fasteners at all intended fastening positions. For the following dimensions, the specified load capacity values of each drawer slide system with the highest permissible dynamic load are:

- **Roller bearing drawer slides for 600 mm extension length and 450 mm drawer width.**
- **Ball bearing drawer slides for 450 mm extension length and 450 mm drawer width.**
- **In case of longer extension length (up to 1,000 mm), the load capacity is reduced by approx. 20 %.**
- **Roller Bearing Drawer Slide Systems:**
FULTERER roller bearing drawer slide systems meet the dynamic test requirements of at least **50,000 cycles** at standard lengths of **600 mm** and standard mounting type under full rated load capacity.
- **Ball Bearing Drawer Slides:**
FULTERER ball bearing drawer slides meet the dynamic test requirements of at least **50,000 cycles** at standard lengths of **450 mm** and standard mounting type under full rated load capacity.



MOUNTING OPTIONS

Besides various standard solutions also customized designs for the installation of drawer slide systems are available:

- **Mounting holes:** round, elongated or key-hole. Always in the centre of the profile, so that the screw heads do not interfere with rollers.
- **Bayonet tabs:** rapid assembly method for fitting of drawer slide systems to sheet metal cabinets and fixtures. Several types and sizes are available.
- **Hanging hooks:** a fast method of assembly of drawer slide systems to cabinets. An angle bracket on the cabinet profile hooks into a pilaster rail in the side of the cabinet.

INSTALLATION

Cabinet profile: Drawer slide systems are attached to the **side wall** of the cabinet with screws or mounting tabs on an inside wall of a cabinet, mostly using the 32 mm pitch.

Drawer profile:

- **Bottom mount:** The bottom edge of the drawer side is resting in the flange of the drawer profile. Both roller and ball bearing slides are available in this style.
- **Side mount:** The drawer profile is attached to the side of the drawer side or pull-out shelf. Both roller and ball bearing drawer slides are available in this style.

CLOSING METHODS

Self-closing (by gravity): Predominately with roller bearing slides where both cabinet and drawer profile are shaped on an angle at the rear to let the drawer roll closed in the last part of the closing travel.

Automatic self-closing with anti-slamming Easy Close Device (ECD):

This feature prevents the drawer from slamming shut by absorbing the initial closing force via a damping cylinder and utilizing aspring mechanism to complete the closing cycle with a very smooth and quiet closing action.

Available for the following temperature ranges:

 +5 to +40 °C

 -10 to +10 °C

 -25 to -5 °C

INDEX

Type	Model	max. Load Capacity	Built-In Width	Mounting	Page
ROLLER BEARING DRAWER SLIDE SYSTEMS					
Regular extension	FR 2021	35 kg	12 mm	bottom mount	12
	FR 2071	70 kg	15 mm	bottom mount	13
	FR 206	100 kg	16 mm	bottom mount	14
	FR 206 ECD	100 kg	16 mm	bottom mount	15
	FR 216	100 kg	24 mm	bottom mount	16
	FR 9000	200 kg	56 mm	bottom & side mount	17
Full extension	FR 6500	50 kg	12 mm	bottom mount	19
	FR 7180	200 kg	24 mm	bottom mount	20
Accessories	FULFIX II (Mounting Jig)				21
	FR 8001 ECD (Easy Close Device)	30 kg	12 mm	side mount	22
	FR 8003 ECD (Easy Close Device)	70 kg	12 mm	side mount	23
VERTICAL PANTRY PULL-OUT SLIDE SYSTEMS					
Regular extension	FR 505-T	80 kg	73 mm	top mount	26
Full extension	FR 775A ECD	75 kg	88.5 mm	floor & top mount	27
	FR 771A	120 kg	108 mm	floor & top mount	28
	FR 777A	200 kg	124 mm	floor & top mount	29
Accessories	FR 771A ECD (Easy Close Device)				30
	FR 777A ECD (Easy Close Device)				31
STAINLESS STEEL ROLLER BEARING DRAWER SLIDE SYSTEMS					
Regular extension	FR 1051 SCC	50 kg	15 mm	side mount	34
	FR 1052 SCC	50 kg	18 mm	side mount	35
	FR 1052 SCC SC	50 kg	18 mm	side mount	36
	FR 2051 SCC	50 kg	15 mm	bottom mount	37
	FR 505 SCC	100 kg	15 mm	bottom mount	38
Full extension	FR 6010 SCC	50 kg	15 mm	side mount	39
	FR 785 SCC	60 / 48 kg	18 mm	side mount	40
	FR 785 SCC SC	60 / 48 kg	18 mm	side mount	41
	FR 786 SCC ECD	60 / 48 kg	18 mm	bottom mount	42
	FR 790 SCC	68 / 53 kg	18 mm	side mount	43
	FR 790 SCC SC	68 / 53 kg	18 mm	side mount	44
	FR 791 SCC	68 / 53 kg	18 mm	bottom mount	45
	FR 7100 SCC	120 / 105 kg	24 mm	bottom mount	46
	FR 7101 SCC	120 / 105 kg	24 mm	side mount	47
Accessories	ECD 78-S / ECD 78-C / ECD 78-F (Easy Close Device)				48
	FR 712 CNS (Locking System)				49

Type	Model	max. Load Capacity	Built-In Width	Mounting	Page
BALL BEARING DRAWER SLIDES					
Full extension	FR 5000	45 kg	13 mm	side mount	52
	FR 5001 ECD	45 kg	12.8 mm	side mount	53
	FR 5002 CNS	45 kg	13.1 mm	side mount	54
	FR 5036	30 kg	13 mm	side mount	55
	FR 5052	90 kg	13 mm	side mount	56
	FR 5400	250 kg	19.5 mm	side mount	57
	FR 5400L	250 kg	19.5 mm	side mount	58
	FR 5426	350 kg	26 mm	side mount	59
	FR 5432	220 kg	32 mm	side mount	60
	FR 5439	500 kg	39 mm	side mount	61
	FR 5609	115 kg	19.1 mm	side mount	62
FR 5826	300 kg	26 mm	side mount	63	
Two-way regular extension	FR 5328	400 kg	13 mm	side mount	64
Accessories	FR 5000 ASW (Side Mount Bracket)		14 mm	side mount	65
	FR 5400 ASW (Side Mount Bracket)	250 kg		side mount	66
	FR 8100 (Locking Handle)				67

Regular extension drawer slide systems, the drawers **cannot be completely extended**; part of it remains in the cabinet. Regular extension drawer slide systems are a **low-cost, economical solution**.

Product features:

- dynamic load capacity from 30 to 100 kg
- nominal lengths from 300 to 1,500 mm
- powder coated or galvanised surface

Full extension drawer slide systems, the drawer can be **fully extended**, with over extension even beyond the front edge of the cabinet.

Progressive action drawer slide systems provide the smoothest running performance. The load in the drawer is equally supported during the full stroke from close to open and vice versa. **Telescopic action full extension drawer slide systems** function incrementally through stages.

Product features:

- high dynamic load capacity from 30 to 200 kg
- nominal lengths from 200 to 1,200 mm
- powder coated or galvanised surface

Regular and full extension drawer slide systems are available in customized design.

A close-up, black and white photograph of a roller bearing drawer slide system. The image shows a white roller wheel on a metal track, with a dark metal drawer front partially visible. The background is a soft, out-of-focus grey.

12 | 23

ROLLER BEARING DRAWER SLIDE SYSTEMS

- REGULAR EXTENSION
- FULL EXTENSION
- ACCESSORIES

FR 2021

Regular Extension Drawer Slide
with Lateral Stability



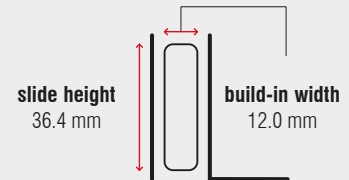
Specifications

-  bottom mount
-  12 mm
-  dynamic up to 35 kg
-  solid synthetic rollers
-  steel, powder coated

Characteristics

- integrated side adjustment – clearance adjustable up to 2 mm
- double hole system on cabinet profile for offset attachment to thin inside walls
- oblong holes in the cabinet profile permit easy height adjustments
- out stop detent
- single-sided captive profile (left)
- self-closing
- compatible with full extension drawer slide FR 6500 and pitch of 32 mm

Dimensions



Length	Extension	Weight	Item No.
		per set	pure white
mm	mm	kg	
300	215	0.50	▶ 7065
350	265	0.58	▶ 7066
400	300	0.67	▶ 7067
450	350	0.73	▶ 7068
500	400	0.82	▶ 7069
550	430	0.91	▶ 7070
600	480	0.99	▶ 7071
650	530	1.09	▶ 7072
700	560	1.17	▶ 7082

Packing Unit – Sets per Box, all Lengths: 20

▶ in stock

FR 2071 | Regular Extension Drawer Slide with Lateral Stability



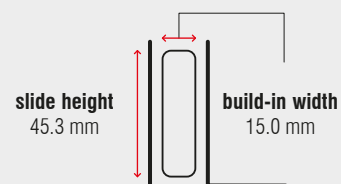
Specifications

-  bottom mount
-  15 mm
-  dynamic up to 70 kg
-  synthetic silent rollers
-  steel, powder coated

Characteristics

- cabinet profile with synthetic stop
- out stop detent
- single-sided captive profile (right)
- self-closing

Dimensions



Length	Extension	Weight	Item No.
		per set	pure white
mm	mm	kg	
300	212	0.86	▶ 1349
350	262	1.09	▶ 1350
400	302	1.13	▶ 1351
450	352	1.27	▶ 1352
500	402	1.41	▶ 1353
550	432	1.54	▶ 1354
600	482	1.69	▶ 1355
650	532	1.83	▶ 1356
700	582	1.97	▶ 1357
750	612	2.10	▶ 1358
800	662	2.25	▶ 1359
850	712	2.41	▶ 1360
900	742	2.52	▶ 1361
950	792	2.61	▶ 1362
1,000	842	2.81	▶ 1363

Packing Unit – Sets per Box, all Lengths: 10






▶ in stock

FR 206

Regular Extension Drawer Slide



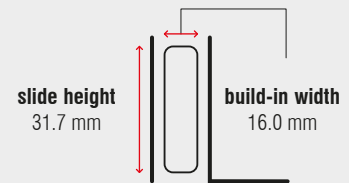
Specifications

-  bottom mount
-  16 mm
-  dynamic up to 100 kg
-  steel ball bearings or solid synthetic rollers
-  steel, zinc plated or powder coated

Characteristics

- stay-closed feature
- out stop detent
- steel rear stop
- zinc plated – steel ball bearings
powder coated – solid synthetic rollers

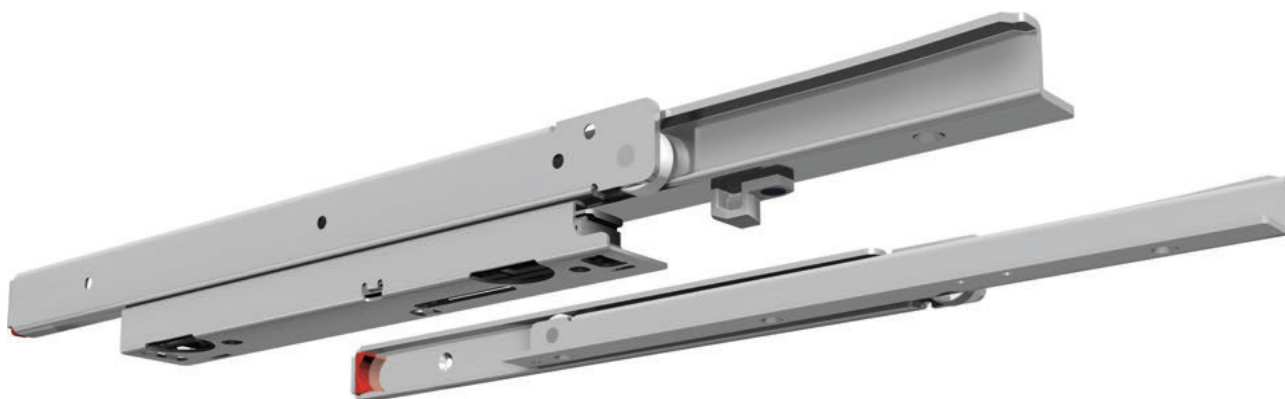
Dimensions



Length	Extension	Weight	Item No.	
			zinc plated	pure white
mm	mm	kg		
300	209	1.41	▶ 4064	*
350	259	1.64	▶ 4065	▶ 4079
400	294	1.86	▶ 4066	▶ 4080
450	344	2.10	▶ 4067	▶ 4081
500	394	2.32	▶ 4068	▶ 4082
550	444	2.55	▶ 4069	▶ 4083
600	494	2.76	▶ 4070	▶ 4084
650	544	2.97	▶ 4071	▶ 4085
700	564	3.23	▶ 4072	▶ 4086
750	614	3.41	▶ 4073	*
800	654	3.66	▶ 4074	▶ 4087
850	704	3.96	▶ 4075	*
900	744	4.18	▶ 4076	▶ 4088
950	794	4.39	▶ 4077	*
1,000	834	4.64	▶ 4078	▶ 4089

Packing Unit – Sets per Box: from 300 to 550 mm: 10 | from 600 to 1,000 mm: 7

▶ in stock | * on request



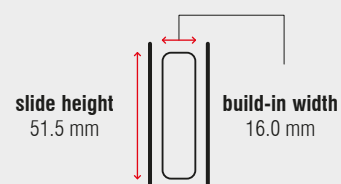
Specifications

-  bottom mount
-  16 mm
-  dynamic up to 100 kg
-  steel ball bearings
-  steel, zinc plated

Characteristics

- stay-closed feature
- out stop detent
- cabinet profile with synthetic stop

Dimensions

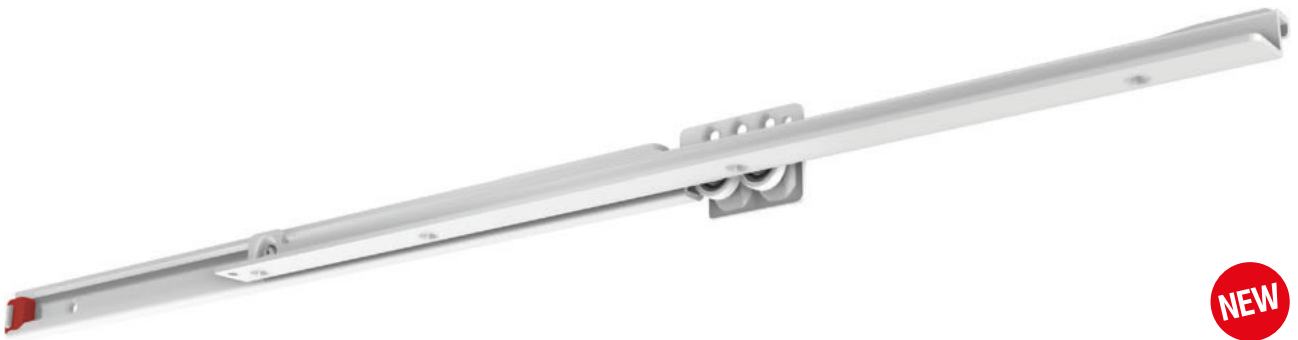


Length	Extension	Weight	Item No.
		per set	zinc plated
mm	mm	kg	
400	294	2.25	▶ 4303
450	344	2.48	▶ 4304
500	394	2.71	▶ 4305
550	444	2.93	▶ 4306
600	494	3.15	▶ 4307
650	544	3.38	▶ 4308
700	564	3.63	▶ 4309
750	614	*	*
800	654	4.08	▶ 4311
850	704	*	*
900	744	4.53	▶ 4313
950	794	*	*
1,000	834	5.08	▶ 4315






Packing Unit – Sets per Box, all Lengths: 2

▶ in stock | * on request

FR 216 | Regular Extension Drawer Slide



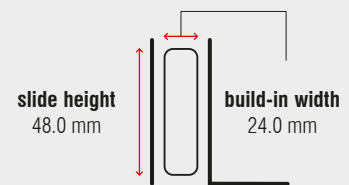
Specifications

-  bottom mount
-  24 mm
-  dynamic up to 100 kg
-  synthetic encased steel ball bearings
-  steel, powder coated or zinc plated

Characteristics

- world's strongest regular extension drawer slide with a load capacity of 100 kg up to a length of 1,500 mm
- dual ball bearings for more stability and longevity
- dual-sided captive profile
- cabinet profile with synthetic stop

Dimensions



Length	Extension	Weight	Item No.	Item No.	Item No.
	zinc plated	per set	zinc plated	black	white aluminium
mm	mm	kg			
600	460	3.44	*	*	► 4001
650	500	*	*	*	*
700	540	3.98	*	*	► 4003
750	580	*	*	*	*
800	620	4.57	*	*	► 4005
850	660	*	*	*	*
900	700	5.11	*	*	► 4007
950	740	*	*	*	*
1,000	780	5.65	*	*	► 4009
1,050	820	*	*	*	*
1,100	860	*	*	*	*
1,150	900	*	*	*	*
1,200	940	7.25	*	*	► 4013
1,250	970	*	*	*	*
1,300	1,010	*	*	*	*
1,350	1,050	*	*	*	*
1,400	1,080	*	*	*	*
1,450	1,120	*	*	*	*
1,500	1,160	8.93	*	*	► 4019

Packing Unit – Sets per Box: from 600 to 750 mm: **5** | from 800 to 1,000 mm: **4** | from 1,050 to 1,500 mm: **2**

► in stock | * on request

FR 9000

Regular Extension Aluminium Drawer Slide



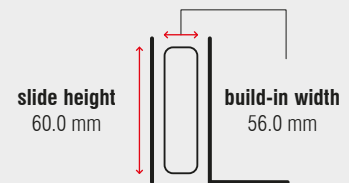
Specifications

-  cabinet profile
-  drawer profile
-  56 mm
-  dynamic up to 200 kg
-  solid synthetic rollers and synthetic encased steel ball bearings
-  aluminium

Characteristics

- modular sliding system for a wide variety of applications
- The special interior shape of the profile compensates installation inaccuracies in width, height and angular direction.
- centerline groove to mark the holes
- The system FR 9000 can be obtained completely assembled or all parts individually to be fabricated by the user enabling to produce odd sizes with the individual components.

Dimensions



Length	Extension	Item No.	Length	Extension	Item No.
mm	mm		mm	mm	
450	315	*	1,300	910	*
500	350	*	1,400	980	*
550	385	*	1,500	1,050	*
600	420	*	1,600	1,120	*
650	455	*	1,700	1,190	*
700	490	*	1,800	1,260	*
750	525	*	1,900	1,330	*
800	560	*	2,000	1,400	*
850	595	*	2,100	1,470	*
900	630	*	2,200	1,540	*
950	665	*	2,300	1,610	*
1,000	700	*	2,400	1,680	*
1,100	770	*	2,500	1,750	*
1,200	840	*			

Minimum order quantity, pricing and lead time on request

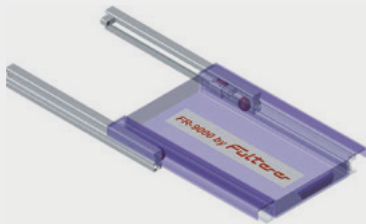
* on request

FR 9000 | Regular Extension Aluminium Drawer Slide



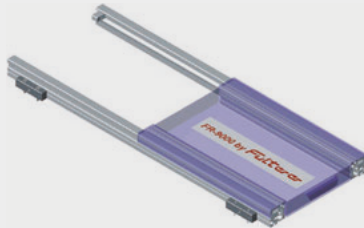
Example FR 9000 Regular Extension

- 2 outer profiles with 4 stops and 2 carriers
- 2 inner profiles with 2 carriers
- all profiles have the same length, extension to one side



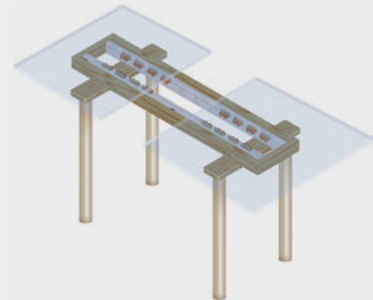
Example FR 9000 Regular Extension

- 2 outer profiles with 4 stops
- 2 inner profiles with 4 carriers
- different lengths of profiles, extension to both sides



Example FR 9000 Table Extension

- 2 outer profiles with 6 stops
- table top with carriers arranged in pairs



Individual Components for Fabricators

Individual Components for Fabricators		Item No.
Extruded Profile	Length 6,140 mm	► 9201
Set for regular extension	2 pcs. tolerance compensating roller carriers (red), 2 pcs. ball bearing carriers (white), 4 pcs. stops, 16 pcs. M6x20mm bolts (DIN7984), 24 pcs. M6 square nuts (DIN557)	► 9200

Assembled Regular Extension Slide	Length	Extension	Weight	Item No.
			per set	
	mm	mm	kg	
FR 9000	1,600	1,120	*	*
FR 9000	1,900	1,330	*	*
FR 9000	2,300	1,610	*	*

Minimum order quantity, pricing and lead time on request

► in stock | * on request

FR 6500 | Over Extension Telescopic Action Drawer Slide



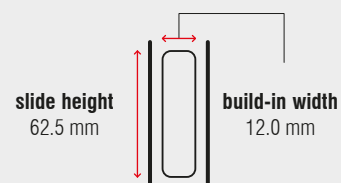
Specifications

-  bottom mount
-  12 mm
-  dynamic up to 50 kg
-  solid synthetic rollers, synthetic silent rollers
-  steel, powder coated

Characteristics

- lateral stability
- absorbing soft stop and lift out prevention clip installed
- easy mounting and removal of middle profile
- with standard over extension
- dual-sided captive profile
- self-closing
- compatible with regular extension drawer slide FR 2021 and pitch of 32 mm

Dimensions



Length	Extension	Weight	Item No.
		per set	pure white
mm	mm	kg	
200	200	0.70	▶ 1200
250	250	0.87	▶ 1201
300	320	1.03	▶ 1202
350	370	1.21	▶ 1203
400	420	1.37	▶ 1204
450	470	1.55	▶ 1205
500	550	1.74	▶ 1206
550	570	1.93	▶ 1207
600	620	2.11	▶ 1208
650	670	2.48	▶ 1260
700	750	2.60	▶ 1261
750	770	2.86	▶ 1262
800	820	3.06	▶ 1263


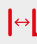


Packing Unit – Sets per Box, all Lengths: 10

▶ in stock

FR 7180 | Full Extension Progressive Action Drawer Slide



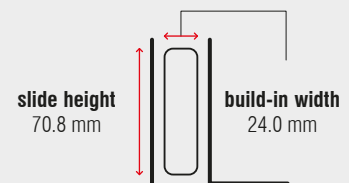
Specifications

-  bottom mount
-  24 mm
-  dynamic up to 200 kg (full extension)
-  solid synthetic rollers
-  steel, zinc plated or powder coated

Characteristics

- high lateral stability
- ideal running characteristic and smoothness of running through integrated progressive action
- integrated safety clip
- dual-sided captive profile
- self-closing

Dimensions

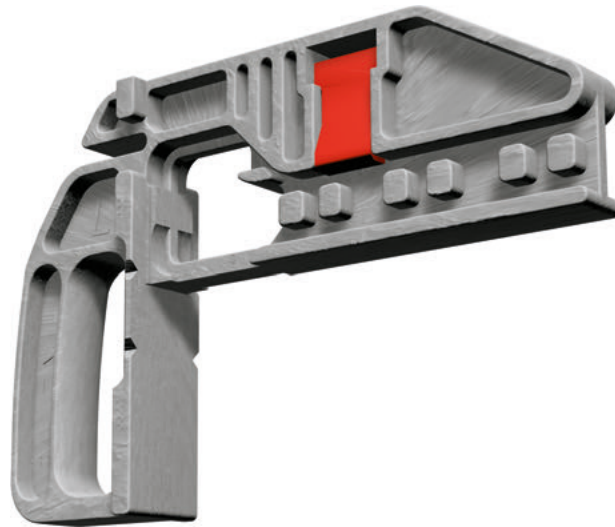


Length	Extension	Weight	Item No.	
			zinc plated	lightgray
mm	mm	kg		
400	385	3.64	▶ 7150	*
450	435	4.11	▶ 7151	*
500	485	4.57	▶ 7152	*
550	535	5.04	▶ 7153	*
600	585	5.50	▶ 7154	*
650	635	5.97	▶ 7155	*
700	685	6.43	▶ 7156	*
750	735	6.90	▶ 7157	*
800	785	7.36	▶ 7158	*
850	835	7.83	▶ 7159	*
900	885	8.29	▶ 7160	*
950	935	8.76	▶ 7161	*
1,000	985	9.22	▶ 7162	▶ 7182
1,200	1,185	11.50	*	▶ 7184

Packing Unit – Sets per Box: from 400 to 600 mm: 4 | from 650 to 1,000 mm: 2 | 1,200 mm: 1

▶ in stock | * on request

FULFIX II | Mounting Jig

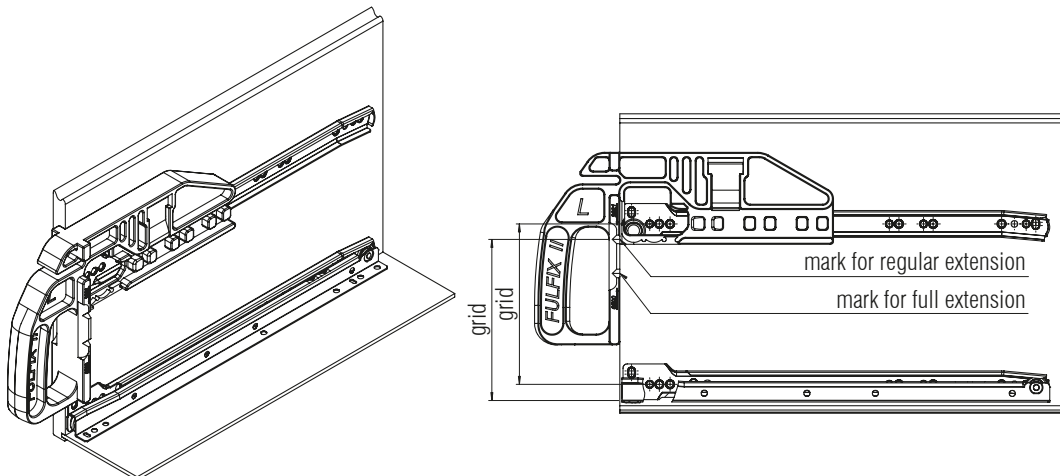


Specifications

-  synthetic material

Characteristics

- suited for the cabinet profiles of FR 2021 and FR 6500
- clamping device assures a perpendicular and square fit onto the cabinet side
- for overlay or insert drawer fronts (19 mm setback)



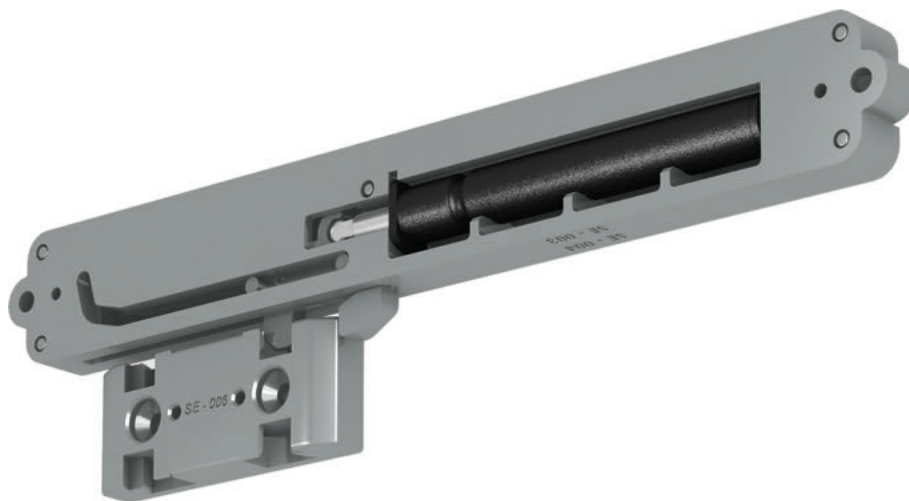
Designation	Weight	Item No.
FULFIX II	0.34 kg	▶ 3000

Packing Unit – Piece: 1




▶ in stock

FR 8001 ECD

Easy Close Device
for Regular Extension Drawer Slides



Specifications

-  side mount
-  12 mm
-  dynamic up to 30 kg
-  synthetic material, steel
-  +10 °C to +40 °C

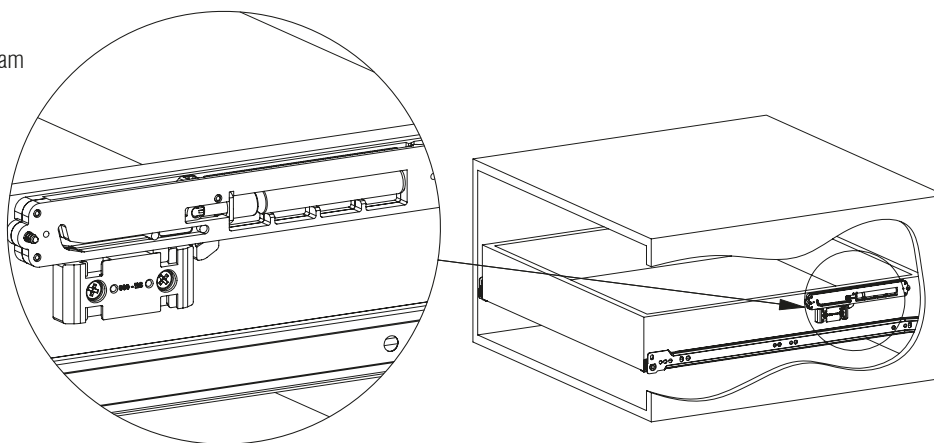
Characteristics

- can be used in combination with any drawer slide with a minimum of 12 mm side clearance
- drawer is softly pulled shut from approximately 30 mm

Delivery Set

- 2 pieces spring and damping cylinder
- 2 pieces latch
- 1 piece mounting instruction
- 1 piece mounting set

mounting diagram



Designation

FR 8001 ECD

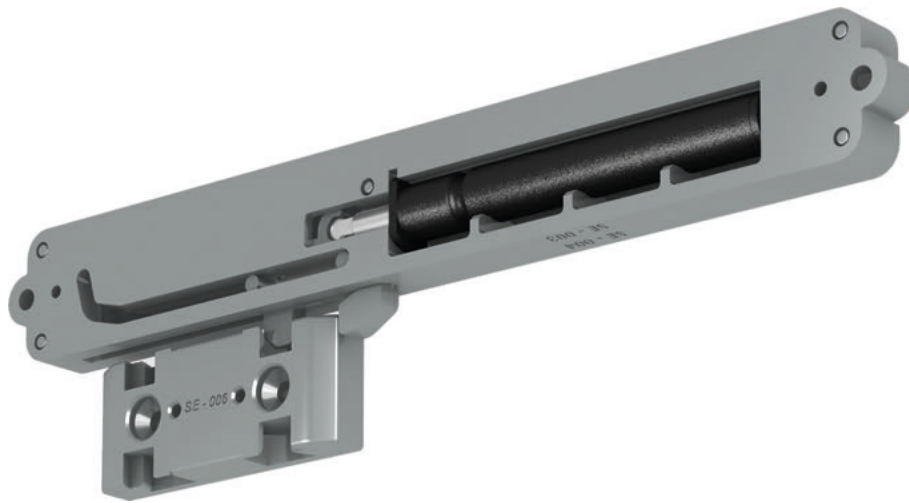
Item No.

► 8001






Packing Unit – Set per Box: 1

► in stock

FR 8003 ECD | Easy Close Device for Regular Extension Drawer Slides



Specifications

-  side mount
-  12 mm
-  dynamic up to 70 kg
-  synthetic material, steel
-  +5 °C to +40 °C

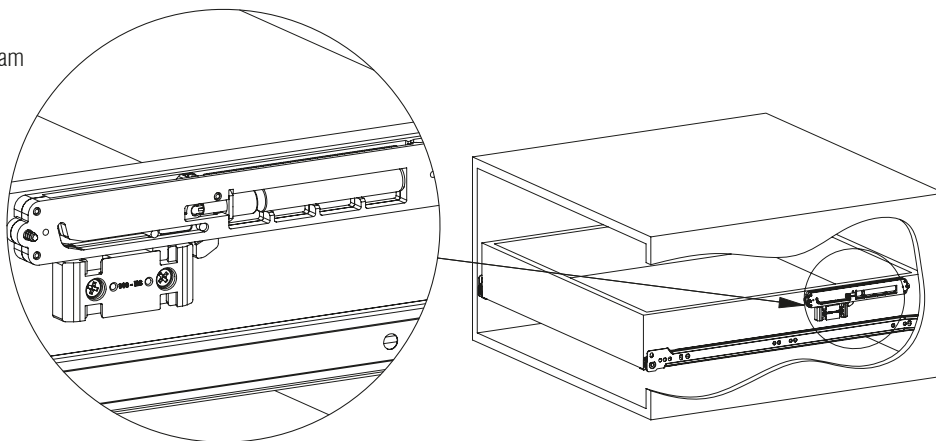
Characteristics

- can be used in combination with any drawer slide with a minimum of 12 mm side clearance
- drawer is softly pulled shut from approximately 30 mm

Delivery Set

- 2 pieces spring and damping cylinder
- 2 pieces latch
- 1 piece mounting instruction
- 1 piece mounting set

mounting diagram



Designation

FR 8003 ECD cold-resistant

Item No.

► 8003

Packing Unit – Set per Box: 1

► in stock

In addition to the standard product range, FULTERER does offer a wide variety to meet your **individual customized applications**. We work closely with customers and provide **expertise and application know-how** in partnership collaborations.

The **regular extension vertical pull-out slide system FR 505-T** for ceiling-mounting has a load capacity of up to 80 kg and is the optimum solution for the attachment of display boards in showrooms and product display areas.

The **full extension progressive action vertical pull-out slide systems FR 775A ECD, FR 771A and FR 777A** are perfect systems for pull-out cupboards in home, kitchen, pharmacy and laboratory applications, as well as for archive cabinets and vertical cupboards for office furniture.

26 | 31

VERTICAL PANTRY PULL-OUT SLIDE SYSTEMS






- REGULAR EXTENSION
- FULL EXTENSION
- ACCESSORIES



FR 505-T | Door Display Slide Regular Extension Vertical Pull-Out Slide



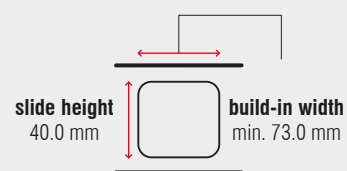
Specifications

-  top mount
-  min. 73 mm
-  dynamic up to 80 kg
-  synthetic encased steel ball bearings
-  steel, powder coated

Characteristics

- for use in all types of showrooms and shops with display walls, door panels etc.
- lateral stability
- light, rigid and silent movement via special roller assembly
- simple assembly via countersunk fixing holes for M6 countersunk screws
- built-in friction stop in the closed and extended position

Dimensions



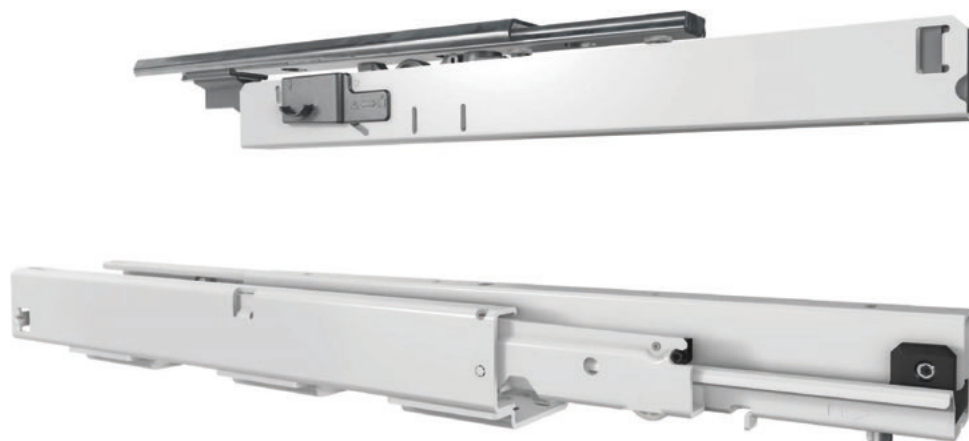
Length	Extension		Weight	Item No.	
	full extension			black	pure white
mm	mm		per set		
450	340		*	*	*
500	375		*	*	*
600	450		*	*	*
700	525		*	*	*
800	600		*	*	*
900	675		*	*	*
995	750		5.73	▶ 80134	*
1,050	790		*	*	*
1,100	825		*	*	*

Packing Unit – Sets per Box, all Lengths: 4

▶ in stock | * on request

FR 775A ECD

Full Extension Progressive Action Vertical Pantry Pull-Out Slide System with Top Guide – up to 75 kg



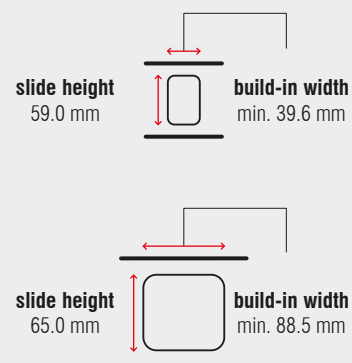
Specifications

-  floor mount
-  min. 88.5 mm
-  dynamic up to 75 kg
-  solid synthetic rollers
-  steel, powder coated

Characteristics

- quick and easy installation through patented slide-on system
- integrated lateral and height adjustment
- recommended maximal cabinet height: 1.500 mm
- recommended maximum cabinet width: 400 mm

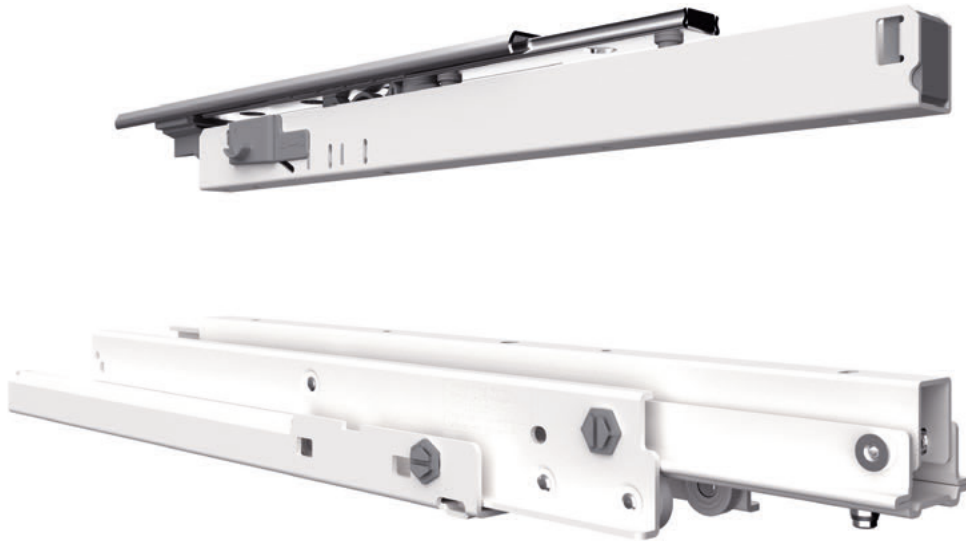
Dimensions




Length	Extension	Weight	Item No.
		per set	pure white
mm	mm	kg	
400	385	5.67	▶ 4221
450	435	6.19	▶ 4222
500	485	6.89	▶ 4223
550	535	7.41	▶ 4224
600	585	8.12	▶ 4225
650	635	8.64	▶ 4226
700	685	9.16	▶ 4227
750	735	9.68	▶ 4228

Packing Unit – Sets per Box, all Lengths: 1

▶ in stock



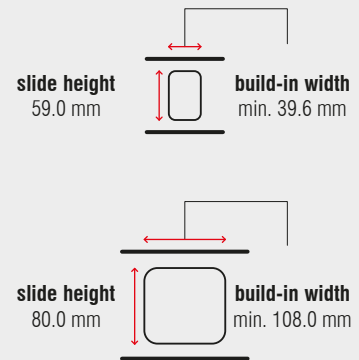
Specifications

-  floor mount
-  min. 108 mm
min. 135 mm (ECD)
-  dynamic up to 120 kg
-  solid synthetic rollers,
synthetic encased steel ball bearings
-  steel, powder coated

Characteristics

- deflection in extended and loaded position maximum 5 mm
- quick and easy installation through patented slide-on system
- integrated lateral and height adjustment
- Easy Close Device FR 771A ECD can be ordered optionally; Item No. 7749
- LGA-tested according to DIN 4554 at 50,000 cycles
- recommended maximal cabinet height: 2,000 mm
- recommended maximum cabinet width: 500 mm

Dimensions



Length	Extension	Weight	Item No.
			pure white
mm	mm	kg	
400	384	6.85	▶ 7741
430	414	*	*
450	434	7.52	▶ 7742
480	464	*	*
500	484	8.38	▶ 7743
550	534	9.05	▶ 7744
600	584	9.77	▶ 7745
650	634	10.44	▶ 7746
700	684	11.11	▶ 7747
750	734	11.79	▶ 7748

Packing Unit – Sets per Box, all Lengths: 1


▶ in stock | * on request

FR 777A

Full Extension Progressive Action Vertical Pantry Pull-Out Slide System with Top Guide – up to 200 kg



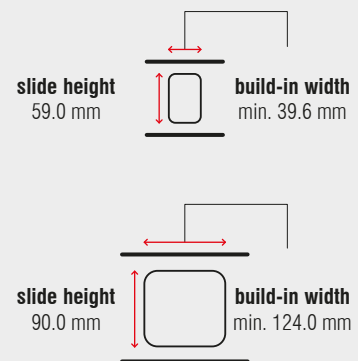
Specifications

-  floor mount
-  min. 124 mm
min. 158 mm (ECD)
-  dynamic up to 200 kg
-  solid synthetic rollers,
synthetic encased steel ball bearings
-  steel, powder coated

Characteristics

- no deflection in fully extended position
- quick and easy installation through patented slide-on system
- integrated lateral and height adjustment
- Easy Close Device FR 777A ECD can be ordered optionally; Item No. 7719
- recommended maximal cabinet height: 2,500 mm
- recommended maximum cabinet width: 600 mm

Dimensions



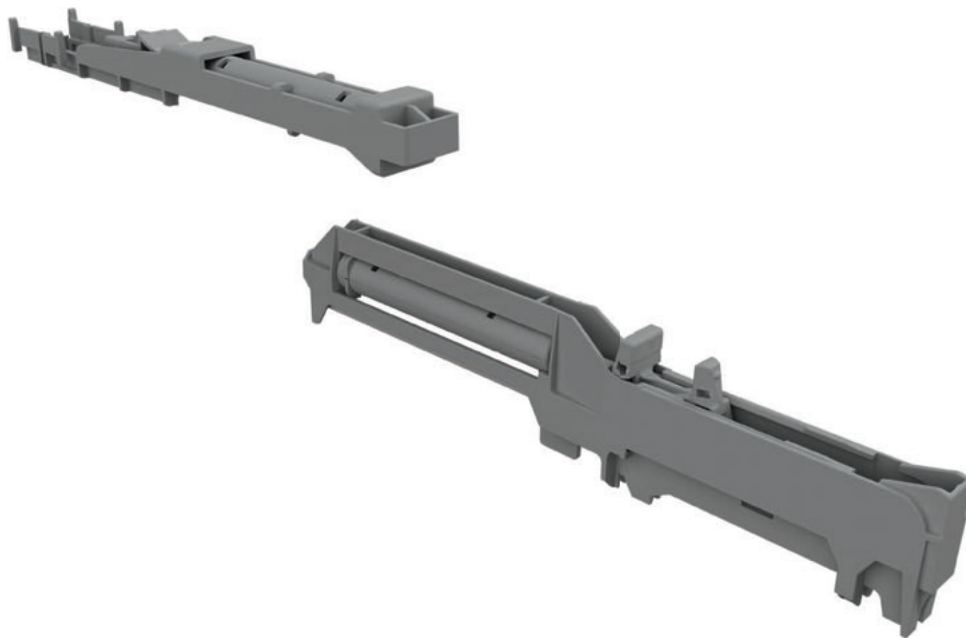
Length	Extension	Weight	Item No.
		per set	pure white
mm	mm	kg	
400	384	10.39	▶ 7700
450	434	11.53	▶ 7701
500	484	12.69	▶ 7702
550	534	13.81	▶ 7703
600	584	14.83	▶ 7704
650	634	15.81	▶ 7705
700	684	17.07	▶ 7706
750	734	18.09	▶ 7707
800	784	19.22	▶ 7708
850	834	20.03	▶ 7709
900	884	21.37	▶ 7710
950	934	22.39	▶ 7711
1,000	984	23.41	▶ 7712
1,100	1,084	24.86	▶ 7713

Packing Unit – Sets per Box, all Lengths: 1



▶ in stock

FR 771A ECD

Easy Close Device Retrofit-Kit
for Vertical Pantry Pull-Out Slide System FR 771A



Specifications

-  synthetic material, steel
-  +5 °C to +40 °C

Characteristics

- Simple assembly due to plug-in system – the vertical pantry pull-out slide system FR 771A is already prepared for the installation of the Easy Close Device retrofit-kit.
- reliable, silent self closing device
- The easy close / self-closing and slam-resistant function is not compromised by varying load conditions.

Delivery Set

top slide:

- 1 x attachable damping system

bottom slide:

- 1 x attachable damping system
- assembly instruction

Designation

FR 771A ECD – Retrofit-kit for vertical pantry pull-out slide system FR 771A

Item No.

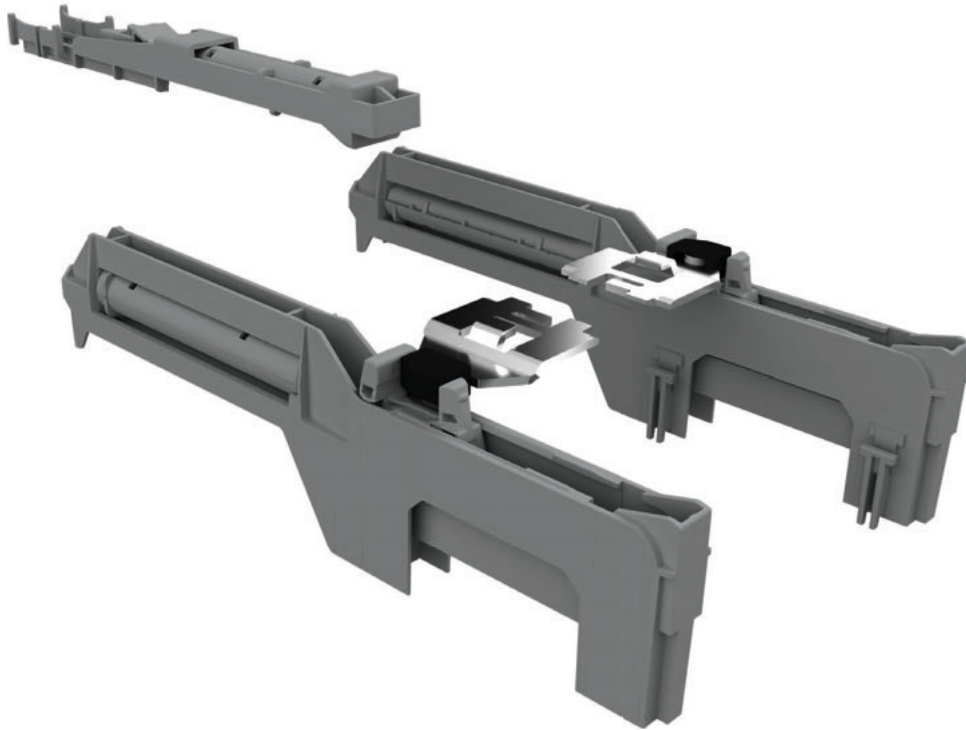
▶ 7749

Packing Unit – Set per Polybag: 1


▶ in stock


FR 777A ECD

Easy Close Device Retrofit-Kit
for Vertical Pantry Pull-Out Slide System FR 777A



Specifications

 synthetic material, steel

 +5 °C to +40 °C

Characteristics

- Simple assembly due to plug-in system – the vertical pantry pull-out slide system FR 777A is already prepared for the installation of the Easy Close Device retrofit-kit.
- reliable, silent self closing device
- The easy close / self-closing and slam-resistant function is not compromised by varying load conditions.

Delivery Set

top slide:

- 1 x attachable damping system

bottom slide:

- 2 x attachable damping system
- 2 x follower, snap-on
- assembly instruction

Designation

FR 777A ECD – Retrofit-kit for vertical pantry pull-out slide system FR 777A

Item No.

▶ 7719

Packing Unit – Set per Polybag: 1

▶ in stock

FULTERER **stainless steel roller bearing drawer slide systems** are used in many areas of daily lives, from **catering, refrigeration and professional kitchen equipment, clima-controlled medical cabinets** and **utility vehicle applications**. Its characteristics stand for corrosion-resistance, durability and robustness. Stainless steel in quality 1.4509, with rounded edges is utilized. Roller bearings are fabricated in stainless steel, quality 1.4034.

All stainless steel drawer slide systems are **NSF-tested** and meet the highest public health and safety standards. The NSF (National Sanitation Foundation) is an internationally recognized institution for the development and compliance with hygiene standards in the food-processing industry. The NSF-quality certificate is issued following inspection and the appropriate fulfillment of all NSF requirements.

FULTERER products feature **optional Easy Close Device (ECD) systems** for silent and linear self-closing, some of which can be retrofitted.

A grayscale photograph of a hand pulling a stainless steel roller bearing drawer slide system. The hand is positioned at the top right, with the thumb and index finger gripping the top edge of the drawer. The slide system is visible, showing the rollers and the track. The background is a plain, light-colored wall.

34 | 49

STAINLESS STEEL ROLLER BEARING DRAWER SLIDE SYSTEMS

- REGULAR EXTENSION
- FULL EXTENSION
- ACCESSORIES

FR 1051 SCC | Regular Extension Drawer Slide with Lateral Stability



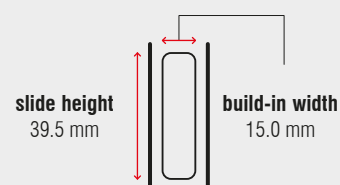
Specifications

-  side mount
-  15 mm
-  dynamic up to 50 kg
-  synthetic silent rollers
-  stainless steel 1.4509 / 441
-  -25 °C to +80 °C

Characteristics

- single-sided captive profile (right)
- rear backstop
- self-closing
- compatible with full extension drawer slide FR 6010 SCC
- available as heat-resistant version up to +210 °C

Dimensions



Length	Extension	Weight	Item No.
		per set	
mm	mm	kg	
400	294	0.95	▶ 1102
450	344	1.05	▶ 1103
500	394	1.20	▶ 1104
550	424	1.34	▶ 1105
600	474	1.43	▶ 1106
650	524	1.56	▶ 1107
700	574	*	▶ 1108
750	624	*	▶ 1109

Packing Unit – Sets per Box, all Lengths: 10

▶ in stock | * on request

FR 1052 SCC | Regular Extension Drawer Slide with Lateral Stability



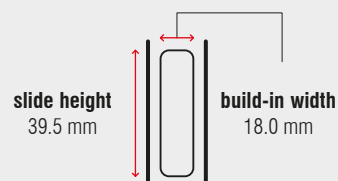
Specifications

-  side mount
-  18 mm
-  dynamic up to 50 kg
-  synthetic silent rollers
-  stainless steel 1.4509 / 441
-  -25 °C to +80 °C

Characteristics

- single-sided captive profile (right)
- rear backstop
- self-closing
- compatible with full extension drawer slide FR 790 SCC and FR 785 SCC

Dimensions



Length	Extension	Weight	Item No.
		per set	
mm	mm	kg	
400	294	0.95	▶ 1601
450	344	1.07	▶ 1602
500	394	1.18	▶ 1603
550	424	1.30	▶ 1604
600	474	1.42	▶ 1605
650	524	1.52	▶ 1606
700	574	*	*
750	624	*	*

Packing Unit – Sets per Box, all Lengths: 10

▶ in stock | * on request

FR 1052 SCC SC | Regular Extension Drawer Slide with Lateral Stability



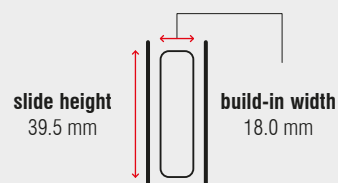
Specifications

-  side mount
-  18 mm
-  dynamic up to 50 kg
-  synthetic silent rollers
-  stainless steel 1.4509 / 441
-  -25 °C to +80 °C

Characteristics

- cabinet profile with bayonet mounting tabs and safety nose
- tool-less quick assembly of the cabinet profile
- single-sided captive profile (right)
- rear backstop
- self-closing
- compatible with full extension drawer slide FR 785 SCC SC

Dimensions



Length	Extension	Weight	Item No.
		per set	
mm	mm	kg	
400	294	0.96	▶ 5302
450	344	1.05	*
500	394	1.17	▶ 5304
550	424	1.29	*
600	474	1.40	▶ 5306
650	524	1.60	*
700	574	*	*
750	624	1.78	*

Packing Unit – Set per Box, all Lengths: 10

▶ in stock | * on request



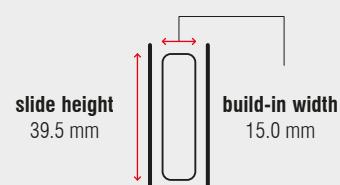
Specifications

-  bottom mount
-  15 mm
-  dynamic up to 50 kg
-  synthetic silent rollers
-  stainless steel 1.4509 / 441
-  -25 °C to +80 °C

Characteristics

- single-sided captive profile (right)
- rear backstop
- self-closing
- available as heat-resistant version up to +210 °C

Dimensions



Length	Extension	Weight	Item No.
		per set	
mm	mm	kg	
400	294	1.13	▶ 1510
450	344	1.20	▶ 1511
500	394	1.31	▶ 1512
550	424	1.48	▶ 1513
600	474	1.61	▶ 1514
650	524	1.79	▶ 1515
700	574	1.87	▶ 1516
750	624	2.01	▶ 1517

Packing Unit – Sets per Box, all Lengths: 10

▶ in stock



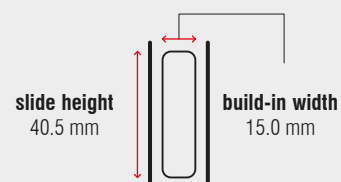
Specifications

-  bottom mount
-  15 mm
-  dynamic up to 100 kg
-  stainless steel ball bearings with integrated synthetic gliding ring
-  stainless steel 1.4509 / 441
-  -25 °C to +80 °C

Characteristics

- rear backstop
- self-closing
- available as heat-resistant version up to +210 °C

Dimensions



Length	Extension	Weight	Item No.
		per set	
mm	mm	kg	
400	294	1.94	▶ 1060
450	344	2.17	▶ 1061
500	394	2.41	▶ 1062
550	444	2.64	▶ 1063
600	494	2.89	▶ 1064
650	544	3.13	▶ 1065
700	584	3.36	▶ 1066
750	634	3.59	▶ 1067

Packing Unit – Sets per Box, all Lengths: 5

▶ in stock



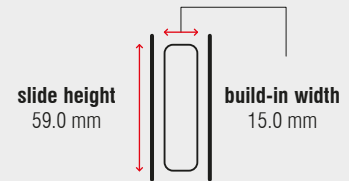
Specifications

-  side mount
-  15 mm
-  dynamic up to 50 kg
-  solid synthetic rollers, stainless steel ball bearings
-  stainless steel 1.4509 / 441
-  -25 °C to +80 °C

Characteristics

- high lateral stability
- middle profile with locking device for easy assembly
- dual-sided captive profile
- synthetic stop
- self-closing
- compatible with regular extension drawer slides FR 1051 SCC
- available as heat-resistant version up to +210 °C

Dimensions



Length	Extension	Weight	Item No.	
			solid synthetic rollers	heat-resistant
		per set		
mm	mm	kg		
300	320	1.41	▶ 90212	*
350	395	1.63	▶ 90213	▶ 2521
400	445	1.79	▶ 90214	▶ 2522
450	495	2.05	▶ 90215	*
500	545	2.28	▶ 90216	▶ 2524
550	595	2.50	▶ 90217	▶ 2525
600	645	2.71	▶ 90218	▶ 2526
650	695	2.94	▶ 90219	*
700	745	3.22	▶ 90220	*
750	795	3.43	▶ 90221	*

Packing Unit – Sets per Box, all Lengths: 6

▶ in stock | * on request



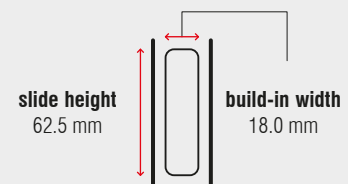
Specifications

- side mount
- 18 mm
- dynamic up to 60 kg (full extension)
dynamic up to 48 kg (over extension)
- solid synthetic rollers
- stainless steel 1.4509 / 441
- 25 °C to +80 °C

Characteristics

- high lateral stability
- cabinet and drawer profile with screw holes
- ideal running characteristic and smoothness of running through integrated progressive action
- integrated safety clip
- dual-sided captive profile
- synthetic stop
- self-closing
- compatible with regular extension drawer slides FR 1052 SCC
- Easy Close Device (ECD) can be ordered optionally; see page 48

Dimensions



Length	Extension		Weight	Item No.	
	full extension	over extension		full extension	over extension
mm	mm	mm	kg		
335	320	395	*	*	*
350	335	410	1.47	▶ 8522	*
385	370	445	*	*	*
400	385	460	1.68	▶ 8524	*
435	420	495	*	*	*
450	435	510	1.91	▶ 8526	*
485	470	545	*	*	*
500	485	560	2.14	▶ 8528	*
535	520	595	*	*	*
550	535	610	2.52	▶ 8530	*
585	570	645	*	*	*
600	585	660	2.60	▶ 8532	*
635	620	695	*	*	*
650	635	710	2.83	▶ 8534	*
685	670	745	*	*	*
700	685	760	3.05	▶ 8536	*
735	720	795	*	*	*
750	735	810	*	*	*

Packing Unit – Sets per Box, all Lengths: 5

▶ in stock | * on request



Specifications

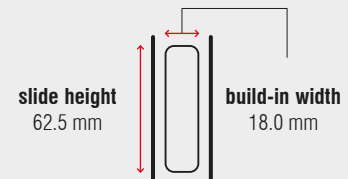
- side mount
- 18 mm
- dynamic up to 60 kg (full extension)
dynamic up to 48 kg (over extension)
- solid synthetic rollers
- stainless steel 1.4509 / 441
- 25 °C to +80 °C

Characteristics

- high lateral stability
- cabinet profile with bayonet mounting tabs and safety nose
- drawer profile without screw holes
- tool-less quick assembly of the cabinet profile
- ideal running characteristic and smoothness of running through integrated progressive action
- integrated safety clip
- dual-sided captive profile
- synthetic stop
- self-closing

- compatible with regular extension drawer slides FR 1052 SCC SC
- Easy Close Device (ECD) can be ordered optionally; see page 48

Dimensions



Length	Extension		Weight	Item No.	
	full extension	over extension		full extension	over extension
mm	mm	mm	kg		
335	320	395	*	*	*
350	335	410	1.50	▶ 8322	*
385	370	445	*	*	*
400	385	460	1.71	▶ 8324	*
435	420	495	*	*	*
450	435	510	1.92	▶ 8326	*
485	470	545	*	*	*
500	485	560	2.13	▶ 8328	*
535	520	595	*	*	*
550	535	610	2.36	▶ 8330	*
585	570	645	*	*	*
600	585	660	2.60	▶ 8332	*
635	620	695	*	*	*
650	635	710	2.86	▶ 8334	*
685	670	745	*	*	*
700	685	760	*	*	*
735	720	795	*	*	*
750	735	810	*	*	*

Packing Unit – Sets per Box, all Lengths: 5

▶ in stock | * on request

FR 786 SCC ECD

Full Extension Progressive Action Drawer Slide



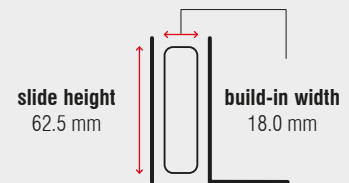
Specifications

-  bottom mount
-  18 mm
-  dynamic up to 60 kg (full extension)
dynamic up to 48 kg (over extension)
-  solid synthetic rollers
-  stainless steel 1.4509 / 441
-  +5 °C to +40 °C

Characteristics

- high lateral stability
- cabinet and drawer profile with screw holes
- ideal running characteristic and smoothness of running through integrated progressive action
- integrated safety clip
- dual-sided captive profile
- Easy Close Device (ECD) pre-assembled

Dimensions



Length	Extension		Weight	Item No.	
	full extension	over extension		full extension	over extension
mm	mm	mm	kg		
335	320	395	*	*	*
350	335	410	1.60	▶ 8222	*
385	370	445	*	*	*
400	385	460	1.86	▶ 8224	*
435	420	495	*	*	*
450	435	510	1.91	▶ 8226	*
485	470	545	*	*	*
500	485	560	2.33	▶ 8228	*
535	520	595	*	*	*
550	535	610	2.58	▶ 8230	*
585	570	645	*	*	*
600	585	660	2.80	▶ 8232	*
635	620	695	*	*	*
650	635	710	3.03	▶ 8234	*
685	670	745	*	*	*
700	685	760	3.28	▶ 8236	*
735	720	795	*	*	*
750	735	810	*	*	*

Packing Unit – Sets per Box, all Lengths: 5

▶ in stock | * on request



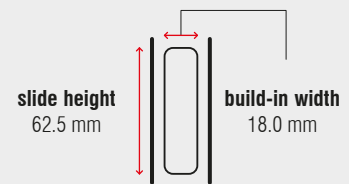
Specifications

-  side mount
-  18 mm
-  dynamic up to 68 kg (full extension)
dynamic up to 53 kg (over extension)
-  solid synthetic rollers
-  stainless steel 1.4509 / 441
-  -25 °C to +80 °C

Characteristics

- high lateral stability
- cabinet and drawer profile with screw holes
- ideal running characteristic and smoothness of running through integrated progressive action
- integrated safety clip
- dual-sided captive profile
- synthetic stop
- self-closing
- compatible with regular extension drawer slide FR 1052 SCC
- available as heat-resistant version up to +110 °C – load capacity 40 kg for over extension (drawer profile without screw holes)

Dimensions



Length	Extension		Weight	Item No.	Item No.	Item No.
	full extension	over extension		full extension	over extension	over extension heat-resistant
mm	mm	mm	kg			
350	335	410	1.62	▶ 7900	*	▶ 7970
400	385	460	1.81	▶ 7901	*	*
450	435	510	2.04	▶ 7902	*	▶ 7972
500	485	560	2.28	▶ 7903	*	▶ 7973
550	535	610	2.49	▶ 7904	▶ 7924	▶ 7974
600	585	660	2.73	▶ 7905	*	▶ 7975
650	635	710	2.98	▶ 7906	▶ 7926	*
700	685	760	3.18	▶ 7907	*	*
750	735	810	*	*	*	*

Packing Unit – Sets per Box, all Lengths: 5





▶ in stock | * on request

FR 790 SCC SC

Full Extension Progressive Action Drawer Slide



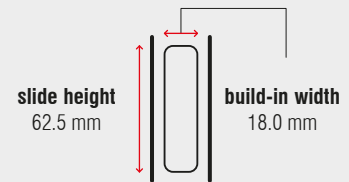
Specifications

-  side mount
-  18 mm
-  dynamic up to 68 kg (full extension)
dynamic up to 53 kg (over extension)
-  solid synthetic rollers
-  stainless steel 1.4509 / 441
-  -25 °C to +80 °C

Characteristics

- high lateral stability
- cabinet profile with bayonet mounting tabs and safety nose
- drawer profile without screw holes
- tool-less quick assembly of the cabinet profile
- ideal running characteristic and smoothness of running through integrated progressive action
- integrated safety clip
- dual-sided captive profile
- synthetic stop
- self-closing
- compatible with regular extension drawer slides FR 1052 SCC SC

Dimensions



Length	Extension		Weight	Item No.	
	full extension	over extension		full extension	over extension
mm	mm	mm	kg		
350	335	410	1.60	*	▶ 8020
400	385	460	1.81	*	▶ 8021
450	435	510	2.04	*	▶ 8022
500	485	560	2.27	*	▶ 8023
550	535	610	2.50	*	▶ 8024
600	585	660	2.77	*	▶ 8025
650	635	710	2.98	*	▶ 8026
700	685	760	3.21	*	▶ 8027
750	735	810	*	*	*

Packing Unit – Sets per Box, all Lengths: 5

▶ in stock | * on request



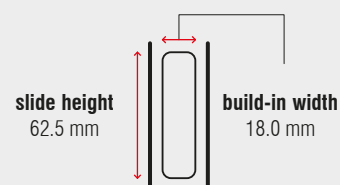
Specifications

-  bottom mount
-  18 mm
-  dynamic up to 68 kg (full extension)
dynamic up to 53 kg (over extension)
-  solid synthetic rollers
-  stainless steel 1.4509 / 441
-  -25 °C to +80 °C

Characteristics

- high lateral stability
- cabinet and drawer profile with screw holes
- ideal running characteristic and smoothness of running through integrated progressive action
- integrated safety clip
- dual-sided captive profile
- synthetic stop
- self-closing

Dimensions



Length	Extension		Weight	Item No.	
	full extension	over extension		full extension	over extension
mm	mm	mm	kg		
350	335	410	*	*	*
400	385	460	1.95	▶ 7941	*
450	435	510	2.21	▶ 7942	*
500	485	560	2.46	▶ 7943	*
550	535	610	2.72	▶ 7944	▶ 81413
600	585	660	2.94	▶ 7945	*
650	635	710	3.17	▶ 7946	*
700	685	760	3.41	▶ 7947	*
750	735	810	*	*	*

Packing Unit – Sets per Box, all Lengths: 5

▶ in stock | * on request



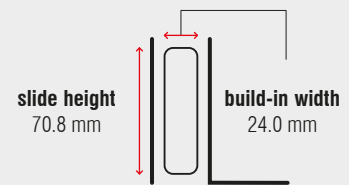
Specifications

- bottom mount
- 24 mm
- dynamic up to 120 kg (full extension)
- dynamic up to 105 kg (over extension)
- dynamic up to 90 kg (heat-resistant)
- solid synthetic rollers
- stainless steel 1.4509 / 441
- 25 °C to +80 °C

Characteristics

- high lateral stability
- cabinet profile with screw holes and drawer profile without holes
- ideal running characteristic and smoothness of running through integrated progressive action
- integrated safety clip
- dual-sided captive profile
- self-closing
- available as heat-resistant version up to +110 °C – load capacity for full extension 90 kg

Dimensions



Length	Extension		Weight	Item No.	Item No.	Item No.
	full extension	over extension				
mm	mm	mm	kg			
400	385	460	3.51	▶ 7130	▶ 7140	*
450	435	510	4.00	▶ 7131	*	*
500	485	560	4.44	▶ 7132	▶ 7142	*
550	535	610	4.86	▶ 7133	▶ 7143	*
600	585	660	5.28	▶ 7134	▶ 7144	*
650	635	710	5.77	▶ 7135	▶ 7145	*
700	685	760	6.37	▶ 7136	*	▶ 82561
750	735	810	7.00	▶ 7137	*	*

Packing Unit – Sets per Box: from 400 to 600 mm: 4 | from 650 to 750 mm: 2

▶ in stock | * on request



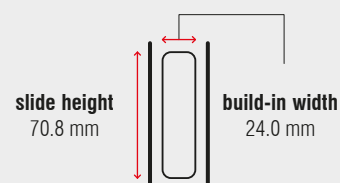
Specifications

-  side mount
-  24 mm
-  dynamic up to 120 kg (full extension)
dynamic up to 105 kg (over extension)
-  solid synthetic rollers
-  stainless steel 1.4509 / 441
-  -25 °C to +80 °C

Characteristics

- high lateral stability
- cabinet profile with screw holes and drawer profile without holes
- ideal running characteristic and smoothness of running through integrated progressive action
- integrated safety clip
- dual-sided captive profile
- self-closing
- available as heat-resistant version up to +110 °C – load capacity for full extension 90 kg, 80 kg for over extension

Dimensions



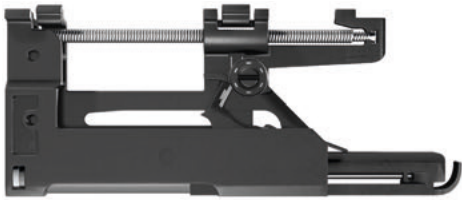
Length	Extension		Weight	Item No.	
	full extension	over extension		full extension	over extension
mm	mm	mm	kg		
400	385	460	3.50	▶ 7110	*
450	435	510	3.98	▶ 7111	*
500	485	560	4.42	▶ 7112	▶ 7122
550	535	610	4.84	▶ 7113	▶ 7123
600	585	660	5.30	▶ 7114	▶ 7124
650	635	710	5.76	▶ 7115	*
700	685	760	6.20	▶ 7116	*
750	735	810	6.63	▶ 7117	*

Packing Unit – Sets per Box: from 400 to 600 mm: 4 | from 650 to 750 mm: 2

▶ in stock | * on request

Easy Close Device

Retrofit-Kit
for FR 785 SCC / FR 785 SCC SC / FR 786 SCC

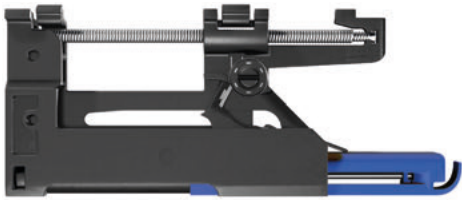


ECD 78-S



Standard Applications

+5 °C to +40 °C

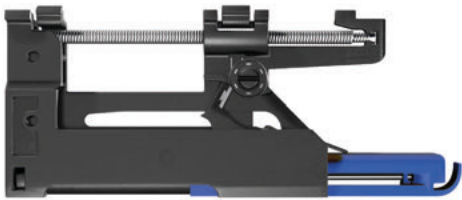


ECD 78-C



Cooling Applications

-10 °C to +10 °C



ECD 78-F



Freezing Applications

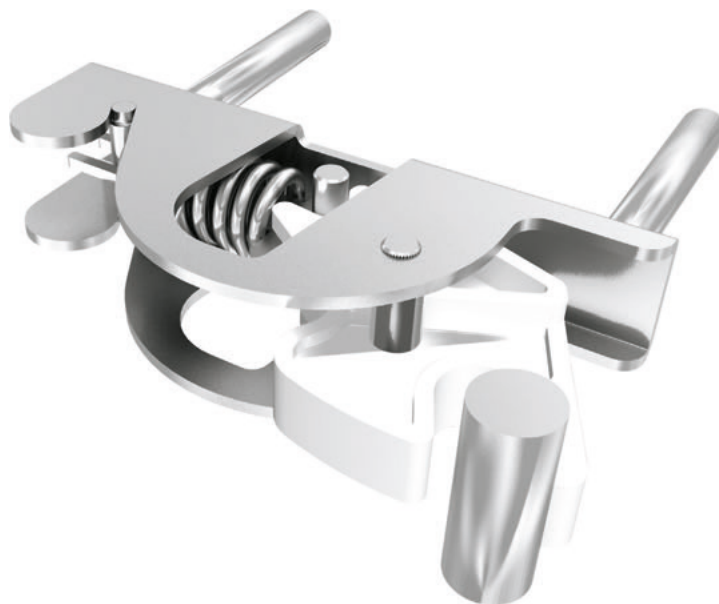
-25 °C to -5 °C

Designation	Weight	Item No.
ECD 78-S	0.09	▶ 83962
ECD 78-C	0.10	▶ 83442
ECD 78-F	0.10	▶ 83443


Packing Unit – Set per Polybag: 1

▶ in stock

FR 712 CNS | Locking System

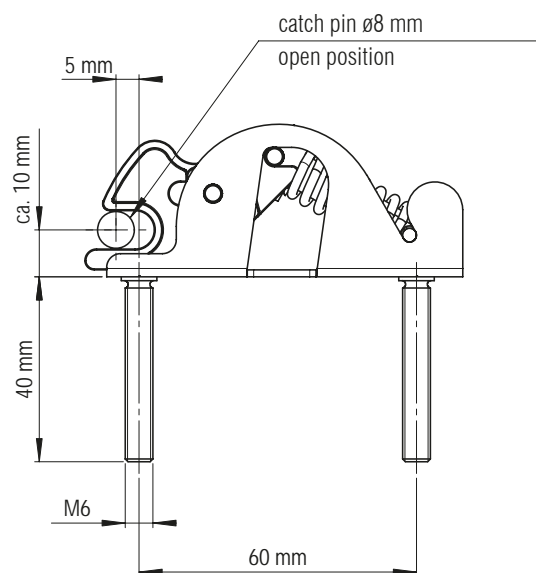
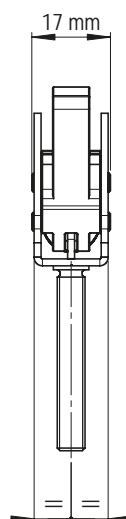
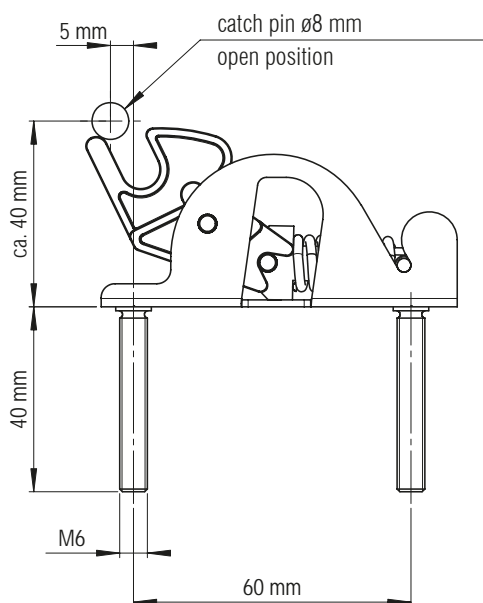


Specifications

 stainless steel 1.4301 / 304

Characteristics

- positive locking device with compression spring
- retention function via compression spring
- mounting via 2 threaded bolts
- supplied without catch pin



Designation

Locking System

Item No.

► 6100067

Packing Unit – Piece: 1

► in stock

Ball bearing drawer slides enable the drawer to be pulled out completely, in the version of **over extension**, even up to the front edge of the cabinet.

Product features:

- high dynamic load capacity from 25 to 500 kg
- nominal lengths from 150 to 1,500 mm
- galvanised steel, stainless steel or aluminium versions

For individual customer requirements customized specific designs with adapted fastening variants are available for almost unlimited type of applications.



52 | 67

BALL BEARING DRAWER SLIDES

- REGULAR EXTENSION
- FULL EXTENSION
- ACCESSORIES

FR 5000 | Full Extension Ball Bearing Slide



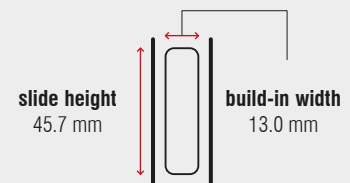
Specifications

-  side mount
-  13 mm
-  dynamic up to 45 kg
-  ball bearing cages
-  steel, zinc plated

Characteristics

- pitch 32 compatible hole locations
- drawer profile with disconnect release trigger
- tolerance absorbing mounting tabs

Dimensions




Length	Extension	Weight	Item No.
		per set	zinc plated
mm	mm	kg	
250	250	0.73	▶ 5050
300	302	0.89	▶ 5051
350	354	1.07	▶ 5052
400	400	1.17	▶ 5053
450	452	1.35	▶ 5054
500	515	1.53	▶ 5055
550	558	1.68	▶ 5056
600	600	1.83	▶ 5057
650	650	1.98	▶ 5058
700	705	2.14	▶ 5059

Packing Unit – Sets per Box, all Lengths: 10

▶ in stock



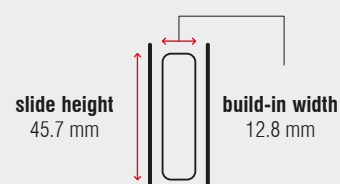
Specifications

-  side mount
-  12.8 mm
-  dynamic up to 45 kg
-  ball bearing cages
-  steel, zinc plated
-  +5 °C to +40 °C

Characteristics

- pitch 32 compatible hole locations
- drawer profile with disconnect release trigger
- tolerance absorbing mounting tabs

Dimensions



Length	Extension	Weight	Item No.
		per set	zinc plated
mm	mm	kg	
300	245	0.90	▶ 5061
355	350	1.05	▶ 5062
405	400	1.20	▶ 5063
450	450	1.36	▶ 5064
500	500	1.51	▶ 5065
550	550	1.61	▶ 5066
600	600	1.81	▶ 5067
650	650	1.97	▶ 5068
700	700	2.13	▶ 5069






Packing Unit – Sets per Box, all Lengths: 10

▶ in stock

FR 5002 CNS | Full Extension Ball Bearing Slide



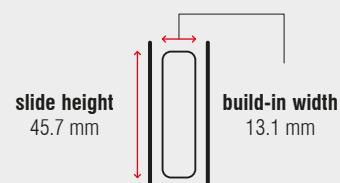
Specifications

-  side mount
-  13.1 mm
-  dynamic up to 45 kg
-  stainless steel ball bearing cages
-  stainless steel 1.4301 / 304

Characteristics

- pitch 32 compatible hole locations
- drawer profile with disconnect release trigger
- tolerance absorbing mounting tabs

Dimensions



Length	Extension	Weight	Item No.
		per set	stainless steel
mm	mm	kg	
250	250	*	*
300	300	*	*
350	350	*	*
400	400	1.18	▶ 5113
450	450	1.32	▶ 5114
500	500	1.50	▶ 5115
550	550	1.65	▶ 5116
600	600	1.80	▶ 5117
650	650	*	*
700	700	*	*
750	750	*	*

Packing Unit – Sets per Box, all Lengths: 10

▶ in stock | * on request

FR 5036 | Full Extension Ball Bearing Slide



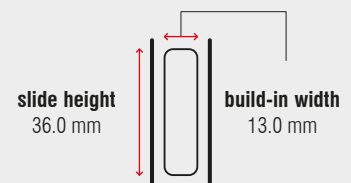
Specifications

-  side mount
-  13 mm
-  dynamic up to 30 kg
-  ball bearing cages
-  steel, zinc plated

Characteristics

- pitch 32 compatible hole locations
- drawer profile with disconnect release trigger
- tolerance absorbing mounting tabs
- self-closing mechanism

Dimensions



Length	Extension	Weight	Item No.
		per set	zinc plated
mm	mm	kg	
250	254	0.58	▶ 5080
300	305	0.69	▶ 5081
350	356	0.82	▶ 5082
400	406	0.92	▶ 5083
450	457	1.06	▶ 5084
500	508	1.15	▶ 5085
550	559	1.27	▶ 5086
600	610	1.39	▶ 5087

Packing Unit – Sets per Box, all Lengths: 20

▶ in stock

FR 5052 | Full Extension Ball Bearing Slide



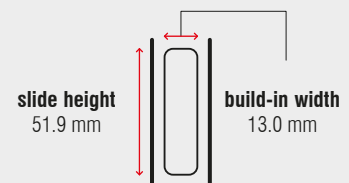
Specifications

-  side mount
-  13 mm
-  dynamic up to 90 kg
-  ball bearing cages
-  steel, zinc plated

Characteristics

- pitch 32 compatible hole locations
- drawer profile with disconnect release trigger
- tolerance absorbing mounting tabs

Dimensions



Length	Extension	Weight	Item No.
		per set	zinc plated
mm	mm	kg	
300	300	1.37	*
350	350	1.59	▶ 5152
400	400	1.83	▶ 5153
450	450	2.05	▶ 5154
500	500	2.33	▶ 5155
550	550	2.69	▶ 5156
600	600	2.80	▶ 5157
650	650	3.05	▶ 5158
700	700	3.30	▶ 5159



Packing Unit – Sets per Box: from 300 to 450 mm: **10** | from 500 to 550 mm: **8** | from 600 to 700 mm: **6**

▶ in stock | * on request

FR 5400 | Full Extension Ball Bearing Slide



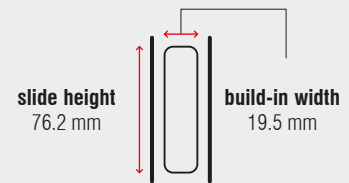
Specifications

-  side mount
-  19.5 mm
-  dynamic up to 250 kg
-  stainless steel ball bearing cages
-  steel, zinc plated

Characteristics

- symmetrical design – can therefore be used on both sides
- slides are non-detachable

Dimensions



Length	Extension	Weight	Item No.
		per set	zinc plated
mm	mm	kg	
254.0	254.0	2.45	▶ 5501
304.8	304.8	2.98	▶ 5502
355.6	355.6	3.48	▶ 5503
406.4	406.4	4.00	▶ 5504
457.2	457.2	4.70	▶ 5505
508.0	508.0	5.20	▶ 5506
558.8	558.8	5.55	▶ 5507
609.6	609.6	6.05	▶ 5508
660.4	660.4	6.60	▶ 5509
711.2	711.2	7.10	▶ 5510
762.0	762.0	7.55	▶ 5511
812.8	812.8	8.10	▶ 5512
863.3	863.3	8.60	▶ 5513
914.4	914.4	9.10	▶ 5514
965.2	965.2	9.60	▶ 5515
1,016.0	1,016.0	10.30	▶ 5516
1,066.8	1,066.8	11.00	▶ 5517
1,117.6	1,117.6	11.40	▶ 5518
1,168.4	1,168.4	11.80	▶ 5519
1,219.2	1,219.2	12.30	▶ 5520
1,270.0	1,270.0	12.70	▶ 5521
1,320.0	1,320.0	13.20	▶ 5522
1,371.6	1,371.6	13.60	▶ 5523
1,422.4	1,422.4	14.10	▶ 5524
1,473.2	1,473.2	14.60	▶ 5525
1,524.0	1,524.0	15.40	▶ 5526


Packing Unit – Sets per Box: from 254.0 to 609.6 mm: 4 | from 660.4 to 863.3 mm: 2 | from 914.4 to 1,524.0 mm: 1

▶ in stock

FR 5400L | Full Extension Ball Bearing Slide with Locking Mechanism



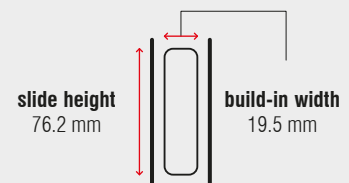
Specifications

-  side mount
-  19.5 mm
-  dynamic up to 250 kg
-  stainless steel ball bearing cages
-  steel, zinc plated

Characteristics

- lock-in and lock-out mechanism
- not symmetrical – function of the locking lever
- slides are non-detachable

Dimensions



Length	Extension	Weight	Item No.
		per set	zinc plated
mm	mm	kg	
304.8	304.8	3.21	► 5362
355.6	355.6	3.75	► 5363
406.4	406.4	4.27	► 5364
457.2	457.2	4.82	► 5365
508.0	508.0	5.35	► 5366
558.8	558.8	5.85	► 5367
609.6	609.6	6.32	► 5368
660.4	660.4	7.00	► 5369
711.2	711.2	7.45	► 5370
762.0	762.0	7.95	► 5371
812.8	812.8	8.50	► 5372
863.6	863.6	9.00	► 5373
914.4	914.4	9.50	► 5374
965.2	965.2	10.00	► 5375
1,016.0	1,016.0	10.70	► 5376
1,066.8	1,066.8	11.40	► 5377
1,117.6	1,117.6	11.80	► 5378
1,168.4	1,168.4	12.30	► 5379
1,219.2	1,219.2	12.70	► 5380
1,270.0	1,270.0	13.10	► 5381
1,320.8	1,320.8	13.80	► 5382
1,371.6	1,371.6	14.10	► 5383
1,422.4	1,422.4	14.50	► 5384
1,473.2	1,473.2	15.00	► 5385
1,524.0	1,524.0	15.80	► 5386




Packing Unit – Sets per Box: from 304.8 to 609.6 mm: 4 | from 660.4 to 863.6 mm: 2 | from 914.4 to 1,524.0 mm: 1

► in stock

FR 5426 | Over Extension Ball Bearing Slide



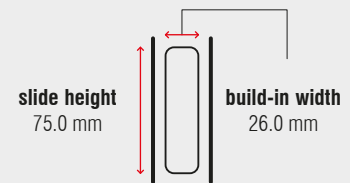
Specifications

-  side mount
-  26 mm
-  dynamic up to 350 kg
-  stainless steel ball bearing cages
-  steel, zinc plated

Characteristics

- symmetrical design
- slides are non-detachable
- flat mounting possible – load capacity reduced
- over extension of 25 mm

Dimensions

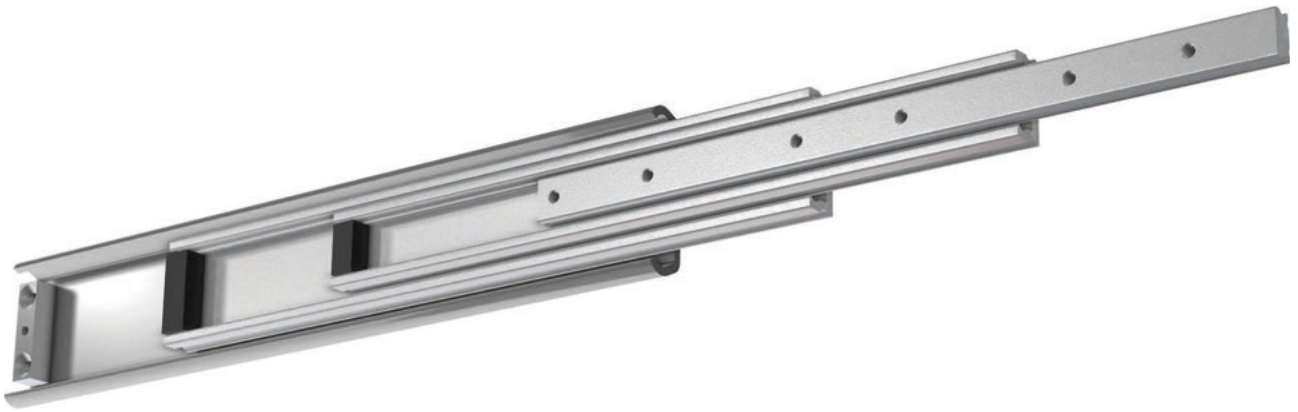


Length	Extension	Weight	Item No.
		per set	zinc plated
mm	mm	kg	
300	310	5.35	*
350	360	6.20	*
400	410	7.10	*
450	460	7.55	*
500	510	8.45	*
550	560	9.35	*
600	610	10.80	*
650	660	11.10	*
700	710	12.00	*
750	760	12.90	*
800	810	13.80	*
850	860	14.70	*
900	910	15.60	*
950	960	16.50	*
1,000	1,010	17.40	*





Packing Unit – Sets per Box: from 300 to 550 mm: 2 | from 600 to 1,000 mm: 1

* on request

FR 5432 | Over Extension Ball Bearing Slide



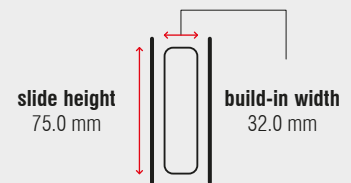
Specifications

-  side mount
-  32 mm
-  dynamic up to 220 kg
-  stainless steel ball bearing cages
-  steel, zinc plated

Characteristics

- 50 % over extension
- symmetrical design
- slides are non-detachable
- flat mounting possible – load capacity reduced

Dimensions

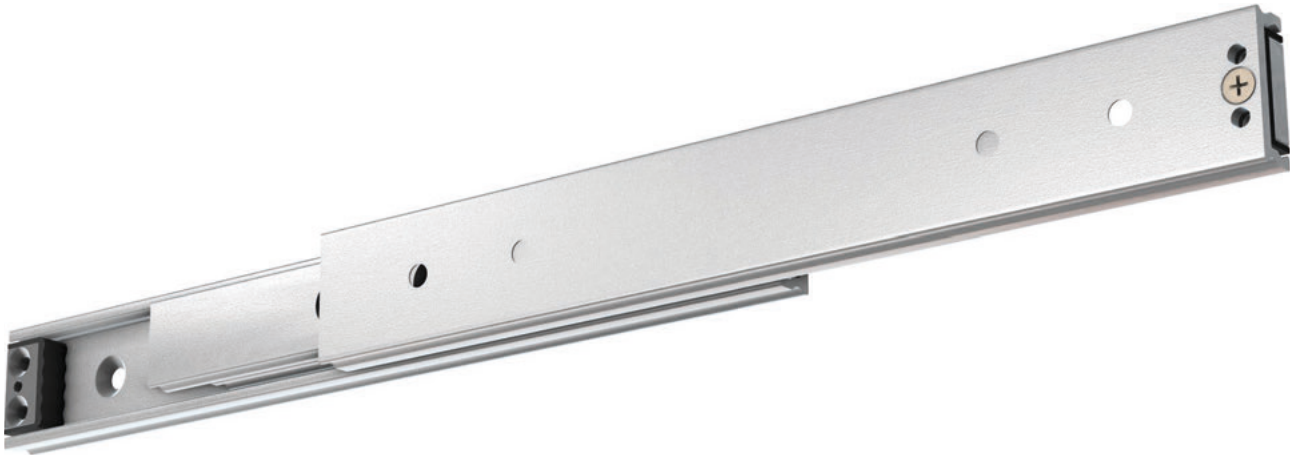


Length	Extension	Weight	Item No.
		per set	zinc plated
mm	mm	kg	
300	450	5.49	*
350	525	6.45	*
400	600	7.45	*
450	675	8.55	*
500	750	9.50	*
550	825	10.50	*
600	900	11.40	*
650	975	12.50	*
700	1,050	13.40	*
750	1,125	14.50	*
800	1,200	15.40	*
850	1,275	16.40	*
900	1,350	17.30	*
950	1,425	18.30	*
1,000	1,500	19.30	*

Packing Unit – Sets per Box: from 300 to 550 mm: 2 | from 600 to 1,000 mm: 1

* on request

FR 5439 | Full Extension Ball Bearing Slide



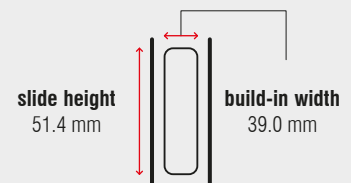
Specifications

-  side mount
-  39 mm
-  dynamic up to 500 kg
-  stainless steel ball bearing cages
-  steel, zinc plated

Characteristics

- ball bearing slide for highest load capacities
- symmetrical design
- slides are non-detachable
- flat mounting possible – load capacity reduced
- synthetic stops

Dimensions



Length	Extension	Weight	Item No.
		per set	zinc plated
mm	mm	kg	
400	400	8.80	*
450	450	10.00	*
500	500	11.20	*
550	550	12.40	*
600	600	13.60	*
650	650	14.80	*
700	700	16.00	*
750	750	17.20	*
800	800	18.40	*
850	850	19.60	*
900	900	20.80	*
950	950	22.00	*
1,000	1,000	23.30	*






Packing Unit – Sets per Box, all Lengths: 1

* on request

FR 5609 | Full Extension Ball Bearing Slide



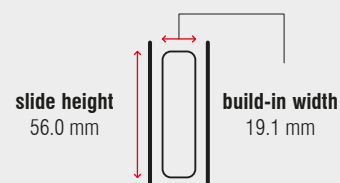
Specifications

-  side mount
-  19.1 mm
-  dynamic up to 115 kg
-  stainless steel ball bearing cages
-  steel, zinc plated

Characteristics

- drawer profile with disconnect release trigger
- symmetrical design
- with hold close detent
- from length 304.8 mm to length 711.2 mm with standard over extension of 25 mm

Dimensions



Length	Extension	Weight	Item No.
		per set	zinc plated
mm	mm	kg	
203.2	203.2	203.2	▶ 5001
254.0	254.0	254.0	▶ 5002
304.8	330.2	330.2	▶ 5003
355.6	381.0	381.0	▶ 5004
406.4	431.8	431.8	▶ 5005
457.2	482.6	482.6	▶ 5006
508.0	533.4	533.4	▶ 5007
558.8	584.2	584.2	▶ 5008
609.6	635.0	635.0	▶ 5009
660.4	685.8	685.8	▶ 5010
711.2	736.6	736.6	▶ 5011
762.0	762.0	762.0	▶ 5012
812.8	812.8	812.8	▶ 5013
863.6	863.6	863.6	▶ 5014
914.4	914.4	914.4	▶ 5015
965.2	965.2	965.2	▶ 5016
1,016.0	1,016.0	1,016.0	▶ 5017
1,066.8	1,066.8	1,066.8	▶ 5018
1,117.6	1,117.6	1,117.6	▶ 5019

Packing Unit – Sets per Box: 203.2 - 457.2 mm: **8** | 508.0 - 609.6 mm: **6** | 660.4 - 1,117.6 mm: **4**






▶ in stock

FR 5826

Full Extension Aluminium Ball Bearing Slide



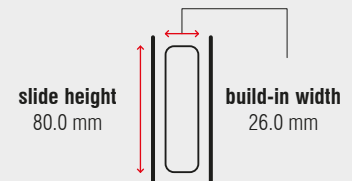
Specifications

-  side mount
-  26 mm
-  dynamic up to 300 kg
-  stainless steel ball bearing cages
-  aluminium

Characteristics

- lightweight ball bearing slide with high weight capacity
- symmetrical design
- slides are non-detachable
- flat mounting possible – load capacity reduced

Dimensions



Length	Extension	Weight	Item No.
		per set	aluminium
mm	mm	kg	
300	300	2.41	*
350	350	2.85	*
400	400	3.31	*
450	450	3.76	*
500	500	4.20	*
550	550	4.63	*
600	600	5.04	*
650	650	5.51	*
700	700	5.86	*
750	750	6.25	*
800	800	6.72	*
850	850	7.22	*
900	900	7.65	*
950	950	7.95	*
1,000	1,000	8.50	*

Packing Unit – Sets per Box: from 300 to 750 mm: 3 | from 800 to 1,000 mm: 2



* on request

FR 5328

Two-Way Regular Extension Ball Bearing Slide



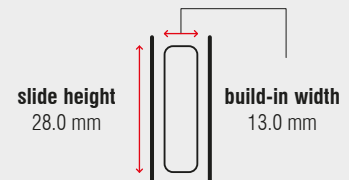
Specifications

-  side mount
-  13 mm
-  dynamic up to 400 kg
-  stainless steel ball bearing cages
-  steel, zinc plated

Characteristics

- two-way regular extension – allows to be operated to both sides end stop
- symmetrical design
- slides are non-detachable
- flat mounting possible – load capacity reduced

Dimensions

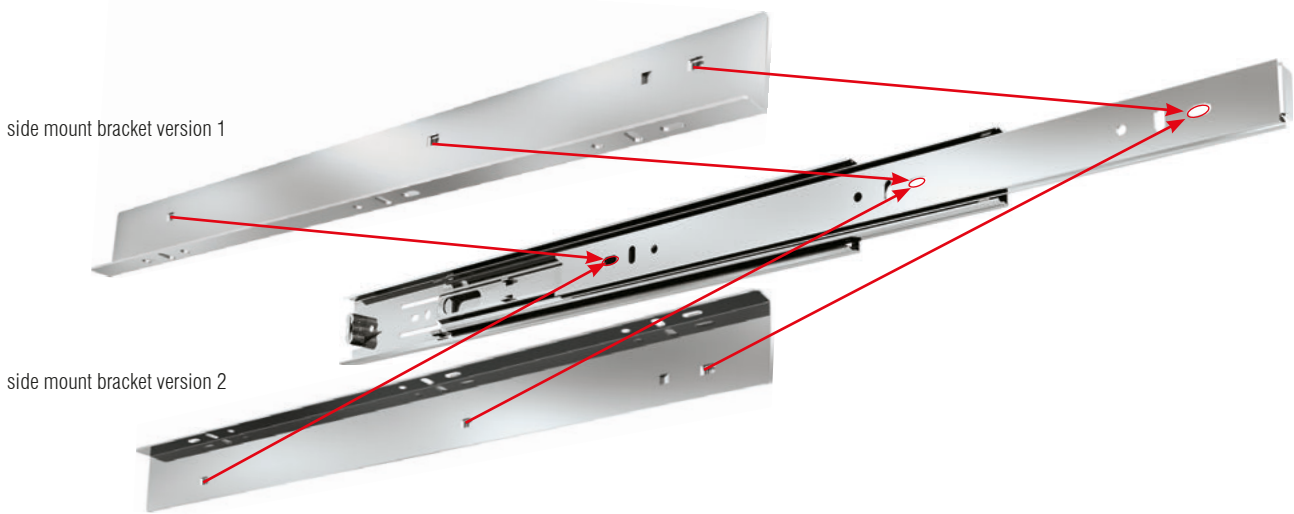


Length	Extension	Weight	Item No.
		per set	zinc plated
mm	mm	kg	
130	74	0.54	*
210	116	0.90	*
290	148	1.26	*
370	190	1.60	*
450	232	1.96	*
530	274	2.32	*
610	316	2.62	*
690	358	2.96	*
770	400	3.30	*
850	433	3.66	*
930	475	4.00	*
1,010	517	4.34	*
1,090	559	4.70	*
1,170	601	5.04	*

Packing Unit – Sets per Box, all Lengths: 5

* on request

FR 5000 ASW | Side Mount Bracket for FR 5000



Specifications

-  side mount
-  14 mm
-  steel, zinc plated

Characteristics

- special side mount bracket for lateral mounting on FR 5000
- for various mounting versions:
 - floor mounting
 - tray mounting
 - bottom mount drawer mounting

Length mount bracket	Length Slide	Weight	Item No.
		per set	zinc plated
mm	mm	kg	
400	400	0.36	▶ 5032
450	452	0.41	▶ 5033
500	515	0.46	▶ 5043
550	558	0.51	▶ 5035

Packing Unit – Sets per Box, all Lengths: 30




▶ in stock

FR 5400 ASW

Side Mount Brackets for Full Extension Ball Bearing Slides FR 5400 and FR 5400L

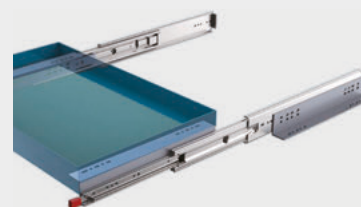


Specifications

-  side mount
-  250 kg
-  steel, zinc plated

Characteristics

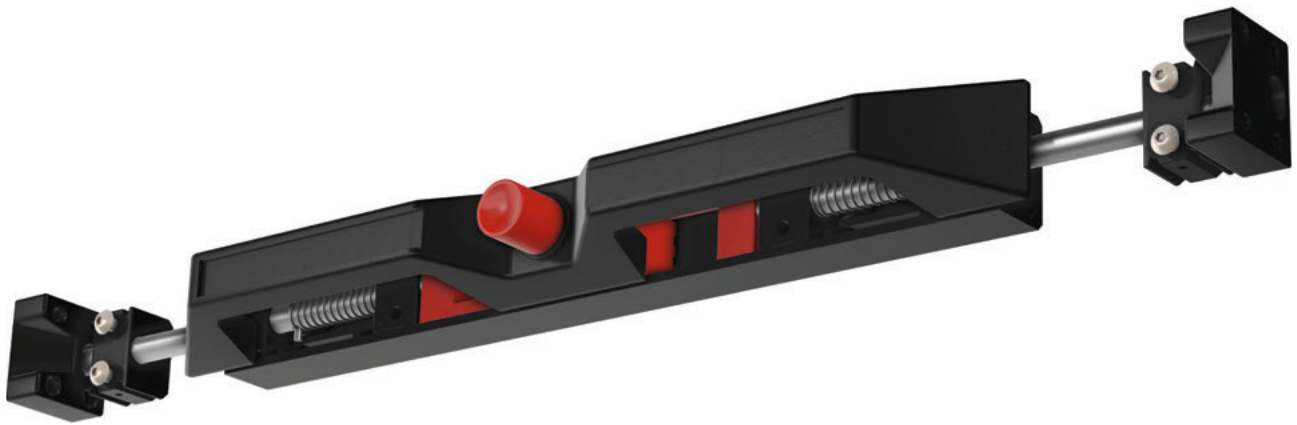
- special side mount bracket for lateral mounting on FR 5400 and FR 5400L
- for various mounting versions:
 - floor mounting
 - tray mounting
 - bottom mount drawer mounting



Slide Model	Slide Length	Bracket Length and Item No.			
		305 mm	406 mm	559 mm	711 mm
	mm	*	*	*	*
5400	304.8	2 sets			
5400 / 5400L	355.6	2 sets			
5400 / 5400L	406.4		2 sets		
5400 / 5400L	457.2		2 sets		
5400 / 5400L	508.0		2 sets		
5400 / 5400L	558.8			2 sets	
5400 / 5400L	609.6			2 sets	
5400 / 5400L	660.4			2 sets	
5400 / 5400L	711.2				2 sets
5400 / 5400L	762.0				2 sets
5400 / 5400L	812.8				2 sets
5400 / 5400L	863.6	4 sets			
5400 / 5400L	914.4	4 sets			
5400 / 5400L	965.0	2 sets		2 sets	
5400	1,016.0	2 sets		2 sets	
5400L	1,016.0	3 sets		1 set	
5400	1,066.8	2 sets		1 set	1 set
5400L	1,066.8	3 sets			1 set
5400	1,117.6	2 sets		2 sets	
5400L	1,117.6	2 sets		1 set	1 set
5400	1,168.4	2 sets		2 sets	
5400L	1,168.4	2 sets		1 set	1 set
5400	1,219.2	2 sets			2 sets
5400L	1,219.2	3 sets			1 set
5400 / 5400L	1,270.0	3 sets			1 set
5400 / 5400L	1,320.8	2 sets	1 set		1 set
5400	1,371.6		1 set	3 sets	
5400L	1,371.6	1 set	1 set	2 sets	
5400 / 5400L	1,422.4	1 set		3 sets	
5400 / 5400L	1,473.2			3 sets	1 set
5400	1,524.0		1 set	2 sets	1 set
5400L	1,524.0		1 set	3 sets	

* on request

FR 8100 | Locking Handle with Lock-In and Lock-Out

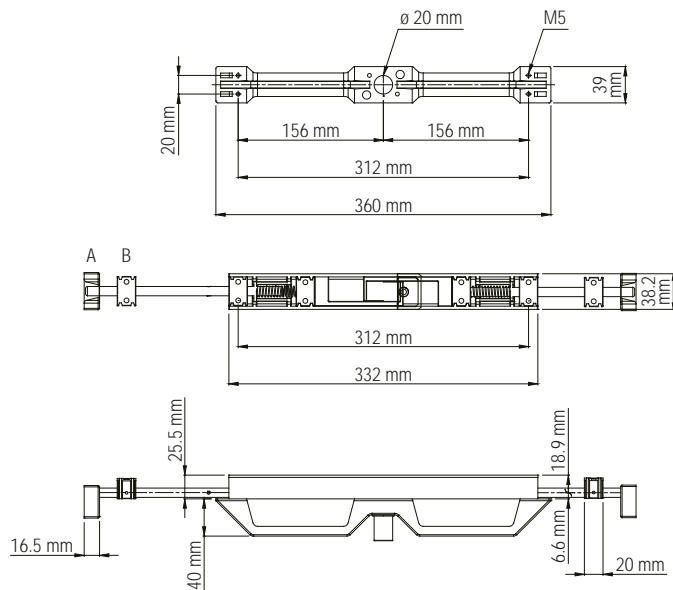


Specifications

- synthetic material, stainless steel

Characteristics

- sold as kit, non-assembled
- for outdoor use and automotive applications
- push button release
- automatic lock-in and lock-out
- 30,000 cycles approved
- supporting drawer width up to 1,622 mm



Designation	Weight	Item No.
	kg	
Locking Handle with 2 pieces 500 mm stainless steel rods	1.70	*
Locking Handle with 2 pieces 750 mm stainless steel rods	2.10	*

Packing Unit – Set, all Lengths: 1

* on request



Legend on the inside.

Fulterer

FULTERER Drawer Slide Systems 2020

For general terms and conditions see:
www.fulterer.com/AGB


IMPRINT

Illustrations, dimensions and technical data shown in this catalogue are for illustrative purposes only and may be changed and adapted to new requirements at any time. We reserve the right to apply design changes and product modifications at any time. With the publication of this catalogue, all previous editions are no longer valid. We assume no liability for typographical and printing errors. All rights reserved. Use of texts and illustrations or reprints – also in extracts – only with our written permission. All deliveries are subject to the FULTERER Terms and Conditions of Sale, Delivery and Payment (GTC), which can be inspected on www.fulterer.com.


© FULTERER AG & Co KG – Lustenau, Austria 2020




LEGEND

 bottom mount


 side mount


 top mount

 floor mount


 built-in width

 type of roller


 ball bearing cage

 material

 temperature range

 load capacity

 integrated ECD

 optional ECD

 NSF approved

MOUNTING INSTRUCTIONS

Detailed mounting instructions,
and technical drawings for all
products on:
www.fulterer.com

FULTERER AG & CO KG

Höchster Strasse 11
Postfach 67
6890 Lustenau
AUSTRIA

T +43 5577 8130
F +43 5577 8130 129
info@fulterer.com
www.fulterer.com

FULTERER AG

Industriestrasse 35
9430 St. Margrethen
SWITZERLAND

T +41 71 747 61 61
F +41 71 747 62 29
info@fulterer.com
www.fulterer.com

FULTERER USA, INC.

542 Townsend Avenue
High Point, NC 27263-4552
USA

T +1 336 431 4646
F +1 336 431 4620
info@fultererusa.com
www.fultererusa.com

FULTERER USA, INC.

1900 Proforma Avenue, Unit F-2
Ontario, CA 91761
USA

T +1 909 947 0407
F +1 909 947 0409
info@fultererusa.com
www.fultererusa.com

FULTERER MÉXICO

S. DE R.L. DE C.V
Av. Morelos 26-28
CP 06040 Ciudad de México
MÉXICO

T +52 55 2345 3248
info@fulterer.com
www.fulterer.com

**FULTERER GUANGZHOU
TRADING CO., LTD.**

1-11 of No. Workshop,
Meng Du Mei Industrial Park,
Qing He East Road,
Shiqi Town, Panyu District
Guangzhou City
CHINA

T +86 20 313 60 424
china@fulterer.com
www.fulterer.com

